

Cleco[®]
Production Tools

Material Removal

HERMES
TOOLS

SOLUTIONS ARE IN OUR DNA.



Designed for operators. Built for production.



Use top-quality, precision components and motor assemblies to deliver **unmatched productivity.**

Manufactured from the finest materials available, Cleco tools deliver efficiency and precision. When it comes to fine finishing applications such as die grinding and de-burring, no tools are better suited for the job than Cleco grinders. Our reputation for durability, dependability and versatility is among the highest for fine finishing applications. Designed for the toughest work environments, Cleco material removal tools are built for you industry's most demanding projects.





Designed for operator **comfort** and **productivity**.

Cleco grinders are designed with the operator in mind: small, lightweight and comfortable to use, without sacrificing durability. Plus, they incorporate elastomer coatings, and perfectly balanced moving parts to keep vibration to a minimum. This optimal combination of tool characteristics allows the operator to focus on doing the best job possible, in the least amount of time.

With **interchangeable parts**, you can rely on a single tool for a range of industrial applications.

We design versatile tools with interchangeable parts to make our products more affordable, easier to repair, and faster to use. Cleco's Dotco sanders, buffers and polishers are available in a variety of styles and power ratings to provide flexibility in choosing the best tool for the job. Disc sanding and polishing, wire brushes, buffing wheels, abrasive sheets, woven or non-woven belts. No matter the application, we have a quality tool solution.



High performance for high-volume, high-repetition tasks.

Cleco's Dotco drills have long been the industry workhorse for daily high-volume, high-precision use in applications ranging from appliances to aerospace manufacturing.

Be it aluminum, steel, titanium, composite, or wood, many industries require hand-drilled holes, and Cleco's Dotco tools offer some of the industry's most durable and reliable hand-held drills, available in pistol, angle and in-line configurations.

10-90 Series - Precision Grinder - Turbine

100,000 RPM 0.06 hp (0.044 kW)

- Requires no air line lubrication - High precision ball bearings for long life expectancy
- Two-stage turbine motor with roll throttle
- Achieves a superb finish with its high speed and precision spindle
- Light weight and durable steel housing
- Low vibration and quiet operation minimizes operator fatigue



Model	Top Seller	Collet Size	Exhaust	Free Speed	Abrasive Capacity Grinder	Type Housing	Weight	Length	Air Inlet Size
				r/min			Lb	in	in
10R9000-03		3 mm	Front	100000	3/16" Carbide Burr, 3/16" Diamond Pin	Aluminum	0.441	5.4	1/8
10R9000-08		1/8 in	Front	100000	3/16" Carbide Burr, 3/16" Diamond Pin	Aluminum	0.441	5.4	1/8

CAUTION: Use dry air at 90 psi maximum; Do not lubricate turbine grinders. Lubrication will be detrimental to the operation and life of turbine tools. Do not attach a quick-disconnect fitting directly to the tool.

Standard Equipment: Applicable collet, collet wrenches, 7 ft./2.1 m air supply hose, replaceable cartridge hose filter.

12-03 Series - Precision Grinder - Gearless - Right Angle

80,000 RPM 0.1 hp (0.074 kW)

- Industrial bearing provides long life expectancy
- Designed for precision deburring and metal removal
- Compact and light weight composite housing
- Roll throttle equipped
- Includes over-hose



Model	Top Seller	Collet Size	Exhaust	Free Speed	Abrasive Capacity Grinder	Type Housing	Overhose	Weight	Length	Air Inlet Size
				r/min				Lb	in	in
12R0380-13		3 mm	Rear	80000	1/4" Carbide Burr, 1/4" Diamond Pin	Composite	1 ft 0.3 m	0.3	5.5	1/8
12R0380-18		1/8 in	Rear	80000	1/4" Carbide Burr, 1/4" Diamond Pin	Composite	1 ft 0.3 m	0.22	5.5	1/8
12R0380-43		3 mm	Rear	80000	1/4" Carbide Burr, 1/4" Diamond Pin	Composite	4 ft 1.2 m	0.22	5.5	1/8

Do not attach a quick-disconnect fitting directly to the tool.

Standard Equipment: Applicable collet, collet wrenches, collet guard, 5 ft/1.5 m air supply hose, 1 ft./0.3 m overhose

10-04 Series - Precision Grinder - Inline

60,000 RPM 0.1 hp (0.074 kW)

- Industrial bearing provides long life expectancy
- Designed for precision deburring and metal removal
- Compact and light aluminum weight housing
- Roll throttle equipped



Model	Top Seller	Collet Size	Exhaust	Free Speed	Overhose	Abrasive Capacity Grinder	Weight	Length	Air Inlet Size	Collet Guard
				r/min			Lb	in	in	
10R0400-13		3 mm	Rear	60000	1 ft 0.3 m	1/4" Carbide Burr, 1/4" Diamond Pin	0.22	5.8	1/8	Short
10R0400-18		1/8 in	Rear	60000	1 ft 0.3 m	1/4" Carbide Burr, 1/4" Diamond Pin	0.22	5.8	1/8	Short
10R0401-13		3 mm	Rear	60000	1 ft 0.3 m	1/4" Carbide Burr, 1/4" Diamond Pin	0.22	5.8	1/8	Long
10R0401-16		3/32 in	Rear	60000	1 ft 0.3 m	1/4" Carbide Burr, 1/4" Diamond Pin	0.22	5.8	1/8	Long
10R0401-18		1/8 in	Rear	60000	1 ft 0.3 m	1/4" Carbide Burr, 1/4" Diamond Pin	0.22	5.8	1/8	Long
10R0401-43		3 mm	Rear	60000	4 ft 1.2 m	1/4" Carbide Burr, 1/4" Diamond Pin	0.22	5.8	1/8	Long
10R0412-18		1/8 in	Rear	60000	1 ft 0.3 m	Discontinued	0.22	6.2	1/8	Discontinued
10R0414-43		3 mm	Rear	60000	4 ft 1.2 m	1/4" Carbide Burr, 1/4" Diamond Pin	0.22	5.8	1/8	Short

Do not attach a quick-disconnect fitting directly to the tool.

Standard Equipment: Applicable collet, collet wrenches, collet guard, 5 ft/1.5 m air supply hose, 1 ft./0.3 m overhose

12-04 Series - Precision Grinder - Inline

60,000 RPM 0.1 hp (0.074 kW)

- Industrial bearing provides long life expectancy
- Designed for precision deburring and metal removal
- Compact and light weight composite housing
- Roll throttle equipped



Model	Top Seller	Collet Size	Exhaust	Free Speed	Overhose	Abrasive Capacity Grinder	Weight	Length	Air Inlet Size	Collet Guard
				r/min			Lb	in	in	
12R0400-13		3 mm	Rear	60000	1 ft 0.3 m	1/4" Carbide Burr, 1/4" Diamond Pin	0.22	5.8	1/8	Short
12R0400-18		1/8 in	Rear	60000	1 ft 0.3 m	1/4" Carbide Burr, 1/4" Diamond Pin	0.22	5.8	1/8	Short
12R0400-43		3 mm	Rear	60000	4 ft 1.2 m	1/4" Carbide Burr, 1/4" Diamond Pin	0.22	5.8	1/8	Short
12R0410-13		3 mm	Rear	60000	1 ft 0.3 m	1/4" Carbide Burr, 1/4" Diamond Pin	0.22	5.8	1/8	Long
12R0410-16		3/32 in	Rear	60000	1 ft 0.3 m	1/4" Carbide Burr, 1/4" Diamond Pin	0.22	5.8	1/8	Long
12R0410-18		1/8 in	Rear	60000	1 ft 0.3 m	1/4" Carbide Burr, 1/4" Diamond Pin	0.22	5.8	1/8	Long
12R0410-43		3 mm	Rear	60000	4 ft 1.2 m	1/4" Carbide Burr, 1/4" Diamond Pin	0.22	5.8	1/8	Long

Do not attach a quick-disconnect fitting directly to the tool.

Standard Equipment: Applicable collet, collet wrenches, collet guard, 5 ft/1.5 m air supply hose, 1 ft./0.3 m overhose

Grinders

MP42 Series Pencil Grinders

70,000 RPM 0.06 hp (0.044 kW)

- Ideal for precision deburring, blending and smoothing applications
- Lightweight, ergonomically designed to be virtually vibration free
- Rear exhaust directs air away from work
- Standard with 5 ft air hose and 1 ft overhose
- Ideal for tight spots
- Slim comfortable design with ergonomic grip for operator comfort



Model	Top Seller	Tool Configuration	Collet Size	Exhaust	Free Speed	Abrasive Capacity Grinder	Type Housing	Overhose	Weight	Length	Air Inlet Size
					r/min				Lb	in	in
MP4200		Inline	1/8 in	Rear	70000	1/4" Carbide Burr, 1/4" Diamond Pin	Aluminum	1 ft 0.3 m	0.441	5.4	1/8
MP4201		Right Angle	1/8 in	Rear	70000	1/4" Carbide Burr, 1/4" Diamond Pin	Aluminum	1 ft 0.3 m	0.441	5.9	1/8

General: Air Inlet 1/4" NPT. Use 1/4" (6.4 mm) I.D. hose. All tools performance rated @ 90psi (620 kPa) air pressure.

Optional:

MP4200 - 70617600 1/8" collet kit (5 pcs.), 70620200PT - 3mm collet kit (5 pcs.)

MP4201 - 70618800 1/8" collet kit (5 pcs.), 70620400PT - 3mm collet kit (5 pcs.)

220G Series - Precision Grinder - Push-Pull Start

60,000 RPM 0.1 hp (0.74 kW)

- Industrial bearing provides long life expectancy
- Designed for precision deburring and metal removal
- Compact and light weight housing
- Available in a kit with a complete set of accessories



Model	Top Seller	Collet Size	Exhaust	Free Speed	Abrasive Capacity Grinder	Type Housing	Weight	Length	Air Inlet Size
				r/min			Lb	in	in
220G-600-C2		1/8 in	Front	60000	1/4" Carbide Burr	Aluminum	0.22	4.6	1/8
220G-600-C2-K*			Front	60000	1/4" Carbide Burr	Aluminum	0.441	4.6	1/8

Standard Equipment: Applicable collet, collet wrenches, 8 ft./2.4m air supply hose, built-in air filter, speed regulator

* Kit includes grinder, hose, collet, collet wrench, cylindrical plain burr 413680, cylindrical radius end burr 413681, cone & taper burr 413682, and tree point burr 413683, carrying case.

18 Series - Steel

50,000 RPM 0.1 hp (0.074 kW)

- Industrial bearing provides long life expectancy
- Designed for precision deburring and metal removal
- Available in a kit with a complete set of accessories



Grinders

15Z Series - Air Marking Pen Kit

20,000 RPM 0.06 hp (0.044 kW)

- Includes 15Z-710 air marking pen
- 5' (1.5m) air hose assembly
- 3/16" ID with 1/8" NPT fittings
- Includes two 1/2" wrenches
- Durable and convenient carrying case



Model	Top Seller	Free Speed	Abrasive Capacity	Weight	Air Inlet Size	Length	Diameter
		r/min		Lb	in	in	in
15Z-720		20000	1/8" Stylus	0.441	1/4	5.5	0.6

Do not attach a quick-disconnect fitting directly to the tool.
Standard Equipment: Carbide tipped stylus

12-05 Series - Precision Grinder- with Collet Guard

40,000 RPM 0.2 hp (0.15 kW)

- Robust design have been continuously improved for six decades
- Compact size for ultimate control - easy access to confined areas
- Ideal for die and mold work as well as deburring
- Comprehensive selection of speed available
- Equipped with dial throttle



Model	Collet Size	Exhaust	Free Speed	Abrasive Capacity Grinder	Type Housing	Weight	Length	Air Inlet Size
			r/min			Lb	in	in
12R0500-36	1/4 in	Front	40000	1/4" Carbide Burr, 7/8" Mounted Wheel	Composite	0.66	5.9	1/8

All tools performance rated @ 90psi / 620 kPa air pressure.
Minimum Hose I.D.: 3/16in / 4.8mm
Standard Equipment: Applicable collet, collet wrenches, collet guard, 7 ft / 2.1m air supply hose

12-10 Series - Die Grinder - 300 Series Collet

12,000 - 34,000 RPM 0.3 hp (0.22 kW)

- Durable and ergonomic composite housing
- Compact size for ultimate control - easy access to confined areas
- Ideal for die and mold work as well as deburring
- Comprehensive selection of speed available
- Standard equipped with lock-off lever



Grinders

Model	Top Seller	Collet Size	Exhaust	Free Speed	Abrasive Capacity Grinder	Type Housing	Weight	Length	Air Inlet Size
				r/min			Lb	in	in
12L1045-36		1/4 in	Front	12000	1/2" Carbide Burr, 1" Mounted Wheel	Composite	0.88	6	1/4
12L1045-36M6*		1/4 in 6 mm	Front	12000	1/2" Carbide Burr, 1" Mounted Wheel	Composite	0.88	6	1/4
12L1046-36		1/4 in	Front	18000	1/2" Carbide Burr, 1" Mounted Wheel	Composite	0.88	6	1/4
12L1028-36		1/4 in	Rear	20000	1/2" Carbide Burr, 1" Mounted Wheel	Composite	0.88	6	1/4
12L1028-36M6*		1/4 in 6 mm	Rear	20000	1/2" Carbide Burr, 1" Mounted Wheel	Composite	0.88	6	1/4
12L1003-36		1/4 in	Front	25000	1/2" Carbide Burr, 1" Mounted Wheel	Composite	0.88	6	1/4
12L1082-36		1/4 in	Rear	25000	1/2" Carbide Burr, 1" Mounted Wheel	Composite	0.88	6	1/4
12L1082-36M6*		1/4 in 6 mm	Rear	25000	1/2" Carbide Burr, 1" Mounted Wheel	Composite	0.88	6	1/4
12L1000-36		1/4 in	Front	30000	1/2" Carbide Burr, 1" Mounted Wheel	Composite	0.88	6	1/4
12L1000-36M6*		1/4 in 6 mm	Front	30000	1/2" Carbide Burr, 1" Mounted Wheel	Composite	0.88	6	1/4
12L1080-36		1/4 in	Rear	30000	1/2" Carbide Burr, 1" Mounted Wheel	Composite	0.88	6	1/4
12L1080-36M6*		1/4 in 6 mm	Rear	30000	1/2" Carbide Burr, 1" Mounted Wheel	Composite	0.88	6	1/4
12L1080-36M6OH*		1/4 in 6 mm	Rear	30000	1/2" Carbide Burr, 1" Mounted Wheel	Composite	0.88	6	1/4
12L1080-36OH		1/4 in	Rear	30000	1/2" Carbide Burr, 1" Mounted Wheel	Composite	0.88	6	1/4
12L1001-36		1/4 in	Front	34000	1/2" Carbide Burr, 1" Mounted Wheel	Composite	0.88	6	1/4
12L1081-36		1/4 in	Rear	34000	1/2" Carbide Burr, 1" Mounted Wheel	Composite	0.88	6	1/4
12L1081-36M6OH*		1/4 in 6 mm	Rear	34000	1/2" Carbide Burr, 1" Mounted Wheel	Composite	0.88	6	1/4
12S1008-36		1/4 in	Front	20000	1/2" Carbide Burr, 1" Mounted Wheel	Composite	0.88	6	1/4

All tools performance rated @ 90 psi / 620 kPa air pressure.

Standard Equipment: Applicable collet, collet wrenches

Minimum Hose I.D.: 1/4 in / 6.4 mm

* -36M6 includes both 1/4" Collet and 6 mm Collet. -36M6OH termination includes both 1/4" Collet and 6 mm Collet and overhose

10-10 Series - 200 & 300 Series Collet - Die Grinder

25,000 - 34,000 RPM 0.3 hp (0.22 kW)

- Durable aluminum housing
- Compact size for ultimate control - easy access to confined areas
- Ideal for die and mold work as well as deburring
- Comprehensive selection of speed available



Model	Top Seller	Collet Size	Exhaust	Free Speed	Abrasive Capacity Grinder	Type Housing	Weight	Length	Air Inlet Size
				r/min			Lb	in	in
10L1003-36		1/4 in	Front	25000	1/2" Carbide Burr, 1" Mounted Wheel	Aluminum	0.66	4.6	1/4
10L1082-36		1/4 in	Rear	25000	1/2" Carbide Burr, 1" Mounted Wheel	Aluminum	0.66	4.6	1/8
10L1000-36		1/4 in	Front	30000	1/2" Carbide Burr, 1" Mounted Wheel	Aluminum	0.66	4.6	1/4
10L1080-36		1/4 in	Rear	30000	1/2" Carbide Burr, 1" Mounted Wheel	Aluminum	0.66	4.6	1/8
10L1097-36		1/4 in	Rear	30000	1/2" Carbide Burr, 1" Mounted Wheel	Aluminum With Bail	0.66	4.6	1/8
10L1001-36		1/4 in	Front	34000	1/2" Carbide Burr, 1" Mounted Wheel	Aluminum	0.66	4.6	1/4
10L1081-36		1/4 in	Rear	34000	1/2" Carbide Burr, 1" Mounted Wheel	Aluminum	0.66	4.6	1/8
10N1081-36*		1/4 in	Rear	34000	1/2" Carbide Burr, 1" Mounted Wheel	Aluminum	0.66	4.6	1/8

All tools performance rated @ 90 psi / 620 kPa air pressure.
 Standard Equipment: Applicable collet, collet wrenches
 Minimum Hose I.D.: 1/4 in / 6.4 mm
 * Tool will start with applied air, intended for fixtured applications

Grinders

12-20 Series - Die Grinder - 200 Series Collet

12,000 - 25,000 RPM 0.6 hp (0.45 kW)

- Ergonomic composite housing
- Front and rear exhaust models available
- Designed to work comfortably with the operator
- Standard equipped with 200 series collet



Model	Top Seller	Collet Size	Exhaust	Free Speed	Abrasive Capacity Grinder	Type Housing	Weight	Length	Air Inlet Size
				r/min			Lb	in	in
12L2003-01		1/4 in	Front	12000	3/4" Carbide Burr, 1.5" Mounted Wheel	Composite	1.32	6.9	1/4
12L2002-01		1/4 in	Front	18000	3/4" Carbide Burr, 1.5" Mounted Wheel	Composite	1.32	6.9	1/4
12L2001-01		1/4 in	Front	20000	3/4" Carbide Burr, 1.5" Mounted Wheel	Composite	1.32	6.9	1/4
12L2081-01		1/4 in	Rear	20000	3/4" Carbide Burr, 1.5" Mounted Wheel	Composite	1.32	6.9	1/4
12L2081-01M6*		1/4 in 6 mm	Rear	20000	3/4" Carbide Burr, 1.5" Mounted Wheel	Composite	1.32	6.9	1/4
12L2081-01M6OH*		1/4 in 6 mm	Rear	20000	3/4" Carbide Burr, 1.5" Mounted Wheel	Composite	1.32	6.9	1/4
12L2000-01		1/4 in	Front	25000	3/4" Carbide Burr, 1.5" Mounted Wheel	Composite	1.32	6.9	1/4
12L2080-01		1/4 in	Rear	25000	3/4" Carbide Burr, 1.5" Mounted Wheel	Composite	1.32	6.9	1/4
12L2080-01M6*		1/4 in 6 mm	Rear	25000	3/4" Carbide Burr, 1.5" Mounted Wheel	Composite	1.32	6.9	1/4
12L2082-01		1/4 in	Rear	18000	3/4" Carbide Burr, 1.5" Mounted Wheel	Composite	1.32	6.9	1/4

All tools performance rated @ 90psi / 620 kPa air pressure.

Standard Equipment: Applicable collet, collet wrenches

Minimum Hose I.D.: 1/4in / 6.4mm

* -36M6 includes both 1/4" Collet and 6 mm Collet. -36M6OH termination includes both 1/4" Collet and 6 mm Collet and overhose. -01M6 includes both 1/4" Collet and 6 mm Collet.

-01M6OH termination includes both 1/4" Collet and 6 mm Collet and overhose.

10-20 Series - 200 & 300 Series Collet - Die Grinder

18,000 - 25,000 RPM 0.6 hp (0.45 kW)

- Durable aluminum housing
- Front, side, and rear exhaust models available
- Designed to work comfortably with the operator



Model	Top Seller	Collet Size	Exhaust	Free Speed	Abrasive Capacity Grinder	Type Housing	Weight	Length	Air Inlet Size
				r/min			Lb	in	in
10L2002-36		1/4 in	Front	18000	3/4" Carbide Burr, 1.5" Mounted Wheel	Aluminum	1.32	6.6	1/4
10L2082-01		1/4 in	Rear	18000	3/4" Carbide Burr, 1.5" Mounted Wheel	Aluminum	1.32	6.6	1/4
10L2005-01		1/4 in	Front	20000	3/4" Carbide Burr, 1.5" Mounted Wheel	Aluminum	1.32	5.7	1/4
10L2081-01		1/4 in	Rear	20000	3/4" Carbide Burr, 1.5" Mounted Wheel	Aluminum	1.32	5.8	1/4
10L2081-01M6*		1/4 in 6 mm	Rear	20000	3/4" Carbide Burr, 1.5" Mounted Wheel	Aluminum	1.32	5.8	1/4
10L2000-01		1/4 in	Front	25000	3/4" Carbide Burr, 1.5" Mounted Wheel	Aluminum	1.32	5.8	1/4
10L2000-36		1/4 in	Front	25000	3/4" Carbide Burr, 1.5" Mounted Wheel	Aluminum	1.1	6.4	1/4
10L2080-01		1/4 in	Rear	25000	3/4" Carbide Burr, 1.5" Mounted Wheel	Aluminum	1.32	5.8	1/4
10L2080-01M6*		1/4 in 6 mm	Rear	25000	3/4" Carbide Burr, 1.5" Mounted Wheel	Aluminum	1.32	5.8	1/4
10L2080-36		1/4 in	Rear	25000	3/4" Carbide Burr, 1.5" Mounted Wheel	Aluminum	1.32	6.4	1/4
10N2080-01**		1/4 in	Rear	25000	3/4" Carbide Burr, 1.5" Mounted Wheel	Aluminum	1.32	5.8	1/4

All tools performance rated @ 90 psi / 620 kPa air pressure.

Standard Equipment: Applicable collet, collet wrenches Minimum Hose I.D.: 5/16 in / 7.9 mm

Termination -01 = 200 Series collet

Termination -36 = 300 series collet

* -36M6 includes both 1/4" Collet and 6 mm Collet. -36M6OH termination includes both 1/4" Collet and 6 mm Collet and overhose. -01M6 includes both 1/4" Collet and 6 mm Collet. -01M6OH termination includes both 1/4" Collet and 6 mm Collet and overhose.

** Tool will start with applied air, intended for fixtured applications

216 Series - 200 Series Collet

25,000 RPM 0.7 hp (0.45 kW)

- Designed for demands of heavy industries, such as shipbuilding, foundries, metal fabrication, etc.
- Rugged advanced alloy housing
- Front and side exhaust models available



Model	Top Seller	Collet Size	Exhaust	Free Speed	Abrasive Capacity Grinder	Type Housing	Weight	Length	Air Inlet Size
				r/min			Lb	in	in
216GLFB-250-C4		1/4 in	Front	25000	3/4" Carbide Burr	Aluminum	1.32	0.63	1/4
216GLSB-250-C4		1/4 in	Side	25000	3/4" Carbide Burr	Aluminum	1.32	0.63	1/4

All tools performance rated @ 90psi / 620 kPa air pressure.
 Standard Equipment: Applicable collet, collet wrenches
 Minimum Hose I.D.: 1/4in / 6.4mm

236 Series - 200 Series Collet

18,000 - 25,000 RPM 0.6 hp (0.45 kW)

- Designed for demands of heavy industries, such as shipbuilding, foundries, metal fabrication, etc.
- Durable advanced alloy housing



12-25 Series - Die Grinder - 200 & 300 Series Collet

12,000 - 23,000 RPM 0.9 hp (0.67 kW)

- Ergonomic composite housing
- Optional over-hose available
- High power-to-weight ratio for optimal productivity



Model	Top Seller	Collet Size	Exhaust	Free Speed	Abrasive Capacity Grinder	Type Housing	Weight	Length	Air Inlet Size
				r/min			Lb	in	in
12L2542-01		1/4 in	Rear	12000	1" Carbide Burr, 1.5" Mounted Wheel	Composite	1.76	7.4	1/4
12L2562-01		1/4 in	Front	12000	1" Carbide Burr, 1.5" Mounted Wheel	Composite	1.76	7.4	1/4
12L2562-01M6		1/4 in 6 mm	Front	12000	1" Carbide Burr, 1.5" Mounted Wheel	Composite	1.76	7.4	1/4
12L2565-01		1/4 in	Front	15000	1" Carbide Burr, 1.5" Mounted Wheel	Composite	1.76	7.4	1/4
12L2502-01*		1/4 in	Front	18000	1" Carbide Burr, 1.5" Mounted Wheel	Composite	1.76	7.3	1/4
12L2568-01		1/4 in	Front	18000	1" Carbide Burr, 1.5" Mounted Wheel	Composite	1.76	7.4	1/4
12L2582-01*		1/4 in	Rear	18000	1" Carbide Burr, 1.5" Mounted Wheel	Composite	1.76	7.3	1/4
12L2500-01*		1/4 in	Front	23000	1" Carbide Burr, 1.5" Mounted Wheel	Composite	1.76	7.3	1/4
12L2500-01M6**		1/4 in 6 mm	Front	23000	1" Carbide Burr, 1.5" Mounted Wheel	Composite	1.76	7.3	1/4
12L2500-36*		1/4 in	Front	23000	1" Carbide Burr, 1.5" Mounted Wheel	Composite	1.76	8	1/4
12L2580-01*		1/4 in	Rear	23000	1" Carbide Burr, 1.5" Mounted Wheel	Composite	1.76	7.3	1/4
12L2580-01M6OH**		1/4 in 6 mm	Rear	23000	1" Carbide Burr, 1.5" Mounted Wheel	Composite	1.76	7.3	1/4
12L2580-36*		1/4 in	Rear	23000	1" Carbide Burr, 1.5" Mounted Wheel	Composite	1.76	8	1/4
12L2582-01M6**		1/4 in 6 mm	Rear	18000	1" Carbide Burr, 1.5" Mounted Wheel	Composite	1.76	7.3	1/4

Governed Speed

* All tools performance rated @ 90 psi / 620 kPa air pressure.

Standard Equipment: Applicable collet, collet wrenches

Minimum Hose I.D.: 5/16 in / 7.9 mm

Termination -01 = 200 Series collet

Termination -36 = 300 series collet

** -36M6 includes both 1/4" Collet and 6 mm Collet. -36M6OH termination includes both 1/4" Collet and 6 mm Collet and overhose. -01M6 includes both 1/4" Collet and 6 mm Collet. -01M6OH termination includes both 1/4" Collet and 6 mm Collet and overhose.

10-25 Series - 200 & 300 Series Collet - Die Grinder

12,000 - 23,000 RPM 0.9 hp (0.67 kW)

- Aluminum housing
- Compact, yet powerful motor



Grinders

Model	Top Seller	Collet Size	Exhaust	Free Speed	Abrasive Capacity Grinder	Type Housing	Weight	Length	Air Inlet Size
				r/min			Lb	in	in
10L2562-01		1/4 in	Front	12000	1" Carbide Burr, 1.5" Mounted Wheel	Aluminum	1.98	7	1/4
10L2565-01		1/4 in	Front	15000	1" Carbide Burr, 1.5" Mounted Wheel	Aluminum	1.98	7	1/4
10L2502-01*		1/4 in	Front	18000	1" Carbide Burr, 1.5" Mounted Wheel	Aluminum	1.32	0.63	1/4
10L2568-01		1/4 in	Front	18000	1" Carbide Burr, 1.5" Mounted Wheel	Aluminum	1.54	7.3	1/4
10L2500-01*		1/4 in	Front	23000	1" Carbide Burr, 1.5" Mounted Wheel	Aluminum	1.32	0.63	1/4
10L2500-36*		1/4 in	Front	23000	1" Carbide Burr, 1.5" Mounted Wheel	Aluminum	1.32	7.1	1/4
10L2580-01*		1/4 in	Rear	23000	1" Carbide Burr, 1.5" Mounted Wheel	Aluminum	1.32	0.63	1/4
10L2580-36*		1/4 in	Rear	23000	1" Carbide Burr, 1.5" Mounted Wheel	Aluminum	1.54	7.9	1/4
10L2582-01*		1/4 in	Rear	18000	1" Carbide Burr, 1.5" Mounted Wheel	Aluminum	1.54	7.3	1/4

Governed; * All tools performance rated @ 90 psi / 620 kPa air pressure.
 Standard Equipment: Applicable collet, collet wrenches
 Minimum Hose I.D.: 5/16 in / 7.9 mm
 Termination -01 = 200 Series collet
 Termination -36 = 300 series collet

MP44 Series Die Grinder

20,000 RPM 0.3 hp (0.223 kW)

- MP4424 is Angle grinder; MP4430 and MP4458 are In line grinders
- Ergonomic grip for operator comfort
- 360° air inlet swivel
- Ideal for general purpose applications



Model	Top Seller	Collet Size	Exhaust	Free Speed	Abrasive Capacity Grinder	Type Housing	Weight	Length	Air Inlet Size
				r/min			Lb	in	in
MP4424		1/4 in	Rear	20000	1/2" Carbide Burr, 1" Mounted Wheel	Composite	1.32	6.4	1/4
MP4430		1/4 in	Rear	23000	1/2" Carbide Burr, 1" Mounted Wheel	Composite	0.88	6	1/4
MP4458		1/4 in	Front	25000	1" Carbide Burr, 1.5" Mounted Wheel	Steel	1.32	6.1	1/4

General: Air Inlet 1/4" NPT. Use 1/4" (6.4 mm) I.D. hose. All tools performance rated @ 90psi (620 kPa) air pressure.

Optional: MP4424 & MP4430: 70619500 3/16" collet; 70610500 1/4" collet; 70610600 6 mm collet; MP4424: 543944 – 16oz. angle head grease.

12-11 Series - Extended - Die Grinder

25,000 - 28,000 RPM 0.3 hp (0.22 kW)



- 3" | 75mm and 5" | 125mm extended housings available
- Overhose available
- Multiple industrial bearings for low vibration and perfect balance

Model	Top Seller	Collet Size	Exhaust	Free Speed	Extension	Abrasive Capacity Grinder	Type Housing	Weight	Length	Air Inlet Size
				r/min	in			Lb	in	in
12L1111-36		1/4 in	Front	25000	3	1/2" Carbide Burr, 1" Mounted Wheel	Composite	1.1	8.9	1/4
12L1112-36		1/4 in	Front	25000	5	1/2" Carbide Burr, 1" Mounted Wheel	Composite	1.32	10.9	1/4
12L1100-36		1/4 in	Front	28000	3	1/2" Carbide Burr, 1" Mounted Wheel	Composite	1.1	8.9	1/4
12L1101-36		1/4 in	Front	28000	5	1/2" Carbide Burr, 1" Mounted Wheel	Composite	1.32	10.9	1/4
12L1180-36		1/4 in	Rear	28000	3	1/2" Carbide Burr, 1" Mounted Wheel	Composite	1.1	8.9	1/4
12L1181-36		1/4 in	Rear	28000	5	1/2" Carbide Burr, 1" Mounted Wheel	Composite	1.32	10.9	1/4

All tools performance rated @ 90 psi / 620 kPa air pressure.
 Standard Equipment: Applicable collet, collet wrenches
 Minimum Hose I.D.: 1/4 in / 4.8 mm

10-11 Series - Extended - Die Grinder - 300 Series Collet

25,000 - 28,000 RPM 0.3 hp (0.22 kW)



- 3" | 75mm & 5" | 125mm extended housing for hard to reach areas
- Available in a variety of speeds
- Balanced and comfortable to minimize fatigue

Model	Top Seller	Collet Size	Exhaust	Free Speed	Extension	Abrasive Capacity Grinder	Type Housing	Weight	Length	Air Inlet Size
				r/min	in			Lb	in	in
10L1111-36		1/4 in	Front	25000	3	1/2" Carbide Burr, 1" Mounted Wheel	Aluminum	1.1	7.6	1/4
10L1112-36		1/4 in	Front	25000	5	1/2" Carbide Burr, 1" Mounted Wheel	Aluminum	1.1	9.8	1/4
10L1100-36		1/4 in	Front	28000	3	1/2" Carbide Burr, 1" Mounted Wheel	Aluminum	1.1	7.6	1/4
10L1101-36		1/4 in	Front	28000	5	1/2" Carbide Burr, 1" Mounted Wheel	Aluminum	1.1	9.8	1/4
10L1101-36M6*		1/4 in 6 mm	Front	28000	5	1/2" Carbide Burr, 1" Mounted Wheel	Aluminum	1.1	9.8	1/4
10L1180-36		1/4 in	Rear	28000	3	1/2" Carbide Burr, 1" Mounted Wheel	Aluminum	1.1	8.4	1/8
10L1181-36		1/4 in	Rear	28000	5	1/2" Carbide Burr, 1" Mounted Wheel	Aluminum	1.1	9.8	1/8

All tools performance rated @ 90 psi / 620 kPa air pressure.

Standard Equipment: Applicable collet, collet wrenches

Minimum Hose I.D.: 1/4 in / 6.4 mm

; * -36M6 includes both 1/4" Collet and 6 mm Collet. -36M6OH termination includes both 1/4" Collet and 6 mm Collet and overhose

12-26 Series - Extended - Die Grinder - 5" (127mm) Extension - 200 Series Collet

12,000 - 22,000 RPM 0.9 hp (0.67 kW)



- 5" | 125mm Extended housing for hard to reach areas
- Available in a variety of speeds
- Balanced and comfortable to minimize fatigue

Model	Collet Size	Exhaust	Free Speed	Abrasive Capacity Grinder	Type Housing	Weight	Length	Air Inlet Size
			r/min			Lb	in	in
12L2602-01	1/4 in	Side	18000	1" Carbide Burr, 1.5" Mounted Wheel	Composite	2.87	12.9	1/4
12L2668-01*	1/4 in	Side	18000	1" Carbide Burr, 1.5" Mounted Wheel	Composite	2.87	12.9	1/4
12L2600-01	1/4 in	Side	22000	1" Carbide Burr, 1.5" Mounted Wheel	Composite	2.87	12.9	1/4
12L2680-01	1/4 in	Rear	22000	1" Carbide Burr, 1.5" Mounted Wheel	Composite	2.87	12.9	1/4
12L2682-01	1/4 in	Rear	12000	1" Carbide Burr, 1.5" Mounted Wheel	Composite	2.87	12.9	1/4

All tools performance rated @ 90 psi / 620 kPa air pressure.

Standard Equipment: Applicable collet, collet wrenches

Minimum Hose I.D.: 5/16 in / 7.9 mm

* Governed

12-26 Series - Die Grinder - Multiple Extension - 300 Series Collet

18,000 RPM 0.9 hp (0.67 kW)

- Can be customized with multiple extensions for access to the most far-reaching areas
- Multiple industrial bearings provides optimal balance and power transfer
- Designed to work comfortably with the operator
- Available with 300 series 1/4" collet and 3/8"-24" external thread



Model	Collet Size	Exhaust	Free Speed	Abrasive Capacity Grinder	Type Housing	Weight	Length	Air Inlet Size
			r/min			Lb	in	in
12S2674-2C	3/8 in-24e	Rear	18000	1.25" Cone or Plug Wheel	Composite	4.19	23.5	1/4
12S2674-4C	3/8 in-24e	Rear	18000	1.25" Cone or Plug Wheel	Composite	6.6	38	1/4
12L2674-2A	1/4 in	Rear	18000	3/4" Carbide Burr, 1-1/2" Mounted Wheel	Composite	4.19	23.5	1/4
12L2674-3A	1/4 in	Rear	18000	3/4" Carbide Burr, 1.5" Mounted Wheel	Composite	5.3	30.8	1/4
12L2674-5A	1/4 in	Rear	18000	3/4" Carbide Burr, 1.5" Mounted Wheel	Composite	7.7	45.3	1/4
12S2674-2AM6*	1/4 in 6 mm E300	Rear	18000	3/4" Carbide Burr, 1.5" Mounted Wheel	Composite	4.19	23.5	1/4
12S2674-4A	1/4 in	Rear	18000	3/4" Carbide Burr, 1.5" Mounted Wheel	Composite	6.6	38	1/4
12S2674-5C	3/8 in-24e	Rear	18000	1.25" Cone or Plug Wheel	Composite	7.7	45.3	1/4

All tools performance rated @ 90 psi / 620 kPa air pressure.
 Standard Equipment: Applicable collet, collet wrenches
 Minimum Hose I.D.: 5/16 in / 7.9 mm
 Termination:
 A - 1/4" Collet
 C - 3/8"-24 e
 12L and 12S have the same throttle configuration
 * -2AM6 includes both 1/4" Collet and 6 mm e300 Collet.

Grinders

236 Series - Extended - 200 Series Collet

18,000 - 24,000 RPM 0.9 hp (0.6 kW)

- Heavy industrial use for shipyards, foundries, metal fabrication, rail yards, etc.
- Offers higher horsepower and torque levels than similar competitive tools



25 Series - Grinder - Extended - Governed - 200 Series Collet



- Lightweight, Ergonomic housing
- Heavy industrial use for shipyards, foundries, metal fabrication, rail yards, etc.
- Extended housing for hard to reach areas
- Offers higher horsepower and torque levels than similar competitive tools

Grinders

Model	Top Seller	Collet Size	Exhaust	Free Speed	Abrasive Capacity Grinder	Type Housing	Weight	Length	Air Inlet Size
				r/min			Lb	in	in
25GELC-120-C4		1/4 in	Rear	12000	1.25" Carbide Burr, 2" Mtd. Wheel	Aluminum	3.09	14.5	3/8
25GELC-180-C4		1/4 in	Side	18000	1.25" Carbide Burr, 2" Mounted Wheel	Aluminum	3.09	14.5	3/8

All tools performance rated @ 90 psi / 620 kPa air pressure.
 Standard Equipment: Applicable collet, collet wrenches
 Minimum Hose I.D.: 3/8 in / 9.5 mm



12LF Series - Die Grinder - Right Angle -36 300 Series Collet - 32 1/4"-28

12,000 - 20,000 RPM 0.4 hp (0.29 kW)

- Composite housing
- Wide array of speeds; front and rear exhaust models available
- Ergonomic and balanced design minimized operator fatigue
- OH version includes 4ft overhose



Grinders

Model	Top Seller	Collet Size	Exhaust	Free Speed	Abrasive Capacity	Abrasive Capacity	Type Housing	Spindle Size	Weight	Length	Head Height	Air Inlet Size
				r/min	Grinder	Sander			Lb	in	in	in
12LF200-32		1/4 in-28i	Front	12000		3" (75 mm) Sanding/ Polishing disc	Composite		1.1	6.6	2.70	1/4
12LF201-32		1/4 in-28i	Front	20000		2" (50 mm) Sanding/ Polishing disc	Composite		1.1	6.6	2.70	1/4
12LF280-32			Rear		1/2" Carbide Burr, 1" Mounted Wheel		Composite	1/4"-28	1.1	6.6	2.70	1/4
12LF280-32OH			Rear		1/2" Carbide Burr, 1" Mounted Wheel		Composite	1/4"-28	1.1	6.6	2.70	1/4
12LF281-32			Rear		1/2" Carbide Burr, 1" Mounted Wheel		Composite	1/4"-28	1.1	6.6	2.70	1/4
12LF281-32OH			Rear		1/2" Carbide Burr, 1" Mounted Wheel		Composite	1/4"-28	1.1	6.6	2.70	1/4
12LF200-36		1/4 in	Front	12000	1/2" Carbide Burr, 1" Mounted Wheel	3" (75 mm) Sanding/ Polishing disc	Composite		1.1	6.6	2.70	1/4
12LF200-36M6*		1/4 in 6 mm	Front	12000	1/2" Carbide Burr, 1" Mounted Wheel	3" (75 mm) Sanding/ Polishing disc	Composite		1.1	6.6	2.70	1/4
12LF280-36		1/4 in	Rear	12000	1/2" Carbide Burr, 1" Mounted Wheel	3" (75 mm) Sanding/ Polishing disc	Composite		1.1	6.6	2.70	1/4
12LF280-36M6*		1/4 in 6 mm	Rear	12000	1/2" Carbide Burr, 1" Mounted Wheel	3" (75 mm) Sanding/ Polishing disc	Composite		1.1	6.6	2.70	1/4
12LF280-36M6OH*		1/4 in 6 mm	Rear	12000	1/2" Carbide Burr, 1" Mounted Wheel	3" (75 mm) Sanding/ Polishing disc	Composite		1.1	6.6	2.70	1/4
12LF201-36		1/4 in	Front	20000	1/2" Carbide Burr, 1" Mounted Wheel	2" (50 mm) Sanding/ Polishing disc	Composite		1.1	6.6	2.70	1/4
12LF201-36M6*		1/4 in 6 mm	Front	20000	1/2" Carbide Burr, 1" Mounted Wheel	2" (50 mm) Sanding/ Polishing disc	Composite		1.1	6.6	2.70	1/4
12LF281-36		1/4 in	Rear	20000	1/2" Carbide Burr, 1" Mounted Wheel	2" (50 mm) Sanding/ Polishing disc	Composite		1.1	6.6	2.70	1/4
12LF281-36M6*		1/4 in 6 mm	Rear	20000	1/2" Carbide Burr, 1" Mounted Wheel	2" (50 mm) Sanding/ Polishing disc	Composite		1.1	6.6	2.70	1/4
12LF280-27		3/8 in-24e	Rear	12000	N/A	3" (75 mm) Sanding/ Polishing disc	Composite		1.1	6.6	2.70	1/4
12LF281-36M6OH*		1/4 in 6 mm	Rear	20000	1/2" Carbide Burr, 1" Mounted Wheel	2" (50 mm) Sanding/ Polishing disc	Composite		1.1	6.6	2.70	1/4

All tools performance rated @ 90 psi / 620 kPa air pressure.

Standard Equipment: Applicable collet, collet wrenches

Minimum Hose I.D.: 1/4 in / 4.8 mm

* -36M6 includes both 1/4" Collet and 6 mm Collet. -36M6OH termination includes both 1/4" Collet and 6 mm Collet and overhose

10LF Series - Die Grinder - Right Angle -36 300 Series Collet - 32 1/4"-28

12,000 - 20,000 RPM 0.4 hp (0.29 kW)

- Composite housing
- Wide array of speeds; front and rear exhaust models available
- Ergonomic and balanced design minimized operator fatigue
- OH Option Supplied with Overhose



Grinders

Model	Top Seller	Collet Size	Exhaust	Free Speed	Abrasive Capacity Grinder	Abrasive Capacity Sander	Type Housing	Weight	Length	Head Height	Air Inlet Size
				r/min				Lb	in	in	in
10LF200-32		1/4 in-28i	Front	12000		3" (75 mm) Sanding/ Polishing Disc	Aluminum	1.1	6.6	2.90	1/4
10LF280-32		1/4 in-28i	Rear	12000		3" (75 mm) Sanding/ Polishing Disc	Aluminum	1.1	6.6	2.90	1/4
10LF201-32		1/4 in-28i	Front	20000		2" (50 mm) Sanding/ Polishing Disc	Aluminum	1.1	6.6	2.90	1/4
10LF281-32		1/4 in-28i	Rear	20000		2" (50 mm) Sanding/ Polishing Disc	Aluminum	1.1	6.6	2.90	1/4
10LF200-36		1/4 in	Front	12000	1/2" Carbide Burr, 1" Mounted Wheel	3" (75 mm) Sanding/ Polishing Disc	Aluminum	1.1	6.6	2.70	1/4
10LF200-36M6*		1/4 in 6 mm	Front	12000	1/2" Carbide Burr, 1" Mounted Wheel	3" (75 mm) Sanding/ Polishing Disc	Aluminum	1.1	6.6	2.70	1/4
10LF280-36		1/4 in	Rear	12000	1/2" Carbide Burr, 1" Mounted Wheel	3" (75 mm) Sanding/ Polishing Disc	Aluminum	1.1	6.6	2.70	1/4
10LF280-36M6*		1/4 in 6 mm	Rear	12000	1/2" Carbide Burr, 1" Mounted Wheel	3" (75 mm) Sanding/ Polishing Disc	Aluminum	1.1	6.6	2.70	1/4
10LF201-36		1/4 in	Front	20000	1/2" Carbide Burr, 1" Mounted Wheel	2" (50 mm) Sanding/ Polishing Disc	Aluminum	1.1	6.6	2.70	1/4
10LF201-36M6*		1/4 in 6 mm	Front	20000	1/2" Carbide Burr, 1" Mounted Wheel	2" (50 mm) Sanding/ Polishing Disc	Aluminum	1.1	6.6	2.70	1/4
10LF281-36		1/4 in	Rear	20000	1/2" Carbide Burr, 1" Mounted Wheel	2" (50 mm) Sanding/ Polishing Disc	Aluminum	1.1	6.6	2.70	1/4
10LF281-36OH		1/4 in	Rear	20000	1/2" Carbide Burr, 1" Mounted Wheel	2" (50 mm) Sanding/ Polishing Disc	Aluminum	1.1	6.6	2.70	1/4

All tools performance rated @ 90 psi / 620 kPa air pressure.

Standard Equipment: Applicable collet, collet wrenches

Minimum Hose I.D.: 1/4 in / 4.8 mm

* -36M6 includes both 1/4" Collet and 6 mm Collet. -36M6OH termination includes both 1/4" Collet and 6 mm Collet and overhose

12-13 Series - Die Grinder - Right Angle - Gearless - 300 Series Collet

20,000 - 30,000 RPM 0.3 hp (0.22 kW)

- Composite housing
- Wide array of speeds offered; front and rear exhaust models available
- Suitable for a wide range of finishing and deburring applications



Model	Collet Size	Exhaust	Free Speed	Abrasive Capacity Grinder	Abrasive Capacity Sander	Type Housing	Weight	Length	Head Height	Air Inlet Size
			r/min				Lb	in	in	in
12L1302-36	1/4 in	Front	20000	1/2" Carbide Burr, 1" Mounted Wheel	2" (50 mm) Sanding/ Polishing Disc	Composite	1.1	7.1	3.70	1/4
12L1301-36	1/4 in	Front	25000	1/2" Carbide Burr, 1" Mounted Wheel	2" (50 mm) Sanding/ Polishing Disc	Composite	1.1	7.1	3.70	1/4
12L1381-36	1/4 in	Rear	25000	1/2" Carbide Burr, 1" Mounted Wheel	2" (50 mm) Sanding/ Polishing Disc	Composite	1.1	7.1	3.70	1/4
12L1300-36	1/4 in	Front	30000	1/2" Carbide Burr, 1" Mounted Wheel	1" (25mm) Sanding/ Polishing Disc	Composite	1.1	7.1	3.70	1/4
12L1380-36	1/4 in	Rear	30000	1/2" Carbide Burr, 1" Mounted Wheel	1" (25mm) Sanding/ Polishing Disc	Composite	1.1	7.1	3.70	1/4
12L1382-36	1/4 in	Rear	20000	1/2" Carbide Burr, 1" Mounted Wheel	2" (50 mm) Sanding/ Polishing Disc	Composite	1.1	7.1	3.70	1/4

All tools performance rated @ 90 psi / 620 kPa air pressure.
Standard Equipment: Applicable collet, collet wrenches
Minimum Hose I.D.: 1/4 in / 4.8 mm

Grinders

12-23 Series - Die Grinder - Right Angle - Gearless - 200 Series Collet

20,000 RPM 0.5 hp (0.38 kW)

- Composite housing
- Suitable for a wide range of finishing and deburring applications



Model	Collet Size	Exhaust	Free Speed	Abrasive Capacity Grinder	Type Housing	Weight	Length	Head Height	Air Inlet Size
			r/min			Lb	in	in	in
12L2384-01	1/4 in	Front	20000	3/4" Carbide Burr, 1.25" Mounted Wheel	Composite	1.98	7.5	5.5	1/4

All tools performance rated @ 90 psi / 620 kPa air pressure.
Standard Equipment: Applicable collet, collet wrenches
Minimum Hose I.D.: 1/4 in / 4.8 mm

12-22 Series - 300 Series Collet

12,000 - 18,000 RPM 0.6 hp (0.45 kW)

- Ergonomic composite housing
- Heavy duty low profile head for greater accessibility
- High output motor in a lightweight package
- 3" | 75mm Extended head available



Grinders

Model	Top Seller	Collet Size	Exhaust	Free Speed	Abrasive Capacity Grinder	Abrasive Capacity Sander	Type Housing	Weight	Length	Head Height	Air Inlet Size
				r/min				Lb	in	in	in
12L2278-36		1/4 in	Rear	14500	1/2" Carbide Burr 1" Mounted Wheel	4" (100mm) Sanding/Polishing Disc	Composite	2.2	10	2.70	1/4
12L2218-36		1/4 in	Rear	18000	1/2" Carbide Burr 1" Mounted Wheel	3" (50mm) Sanding/Polishing Disc	Composite	1.76	7.5	2.70	1/4
12L2277-36		1/4 in	Rear	12000	1/2" Carbide Burr 1" Mounted Wheel	4" (100mm) Sanding/Polishing Disc	Composite	2.2	10	2.70	1/4

All tools performance rated @ 90 psi / 620 kPa air pressure.
 Standard Equipment: Applicable collet, collet wrenches
 Minimum Hose I.D.: 5/16 in / 7.9 mm

12-22 Series - Die Grinder - Right Angle - Heavy Duty Head - 200 Series Collet

9,000 - 11,000 RPM 0.6 hp (0.45 kW)

- Composite housing
- Wide array of speeds; front, side, and rear exhaust models available
- Ergonomic and balanced design minimized operator fatigue



Model	Collet Size	Exhaust	Free Speed	Abrasive Capacity Grinder	Type Housing	Weight	Length	Head Height	Air Inlet Size
			r/min			Lb	in	in	in
12L2251-01	1/4 in	Side	9000	3/4" Carbide Burr, 2" Mounted Wheel	Composite	3.31	9.3	3.90	1/4
12L2252-01	1/4 in	Side	11000	3/4" Carbide Burr, 2" Mounted Wheel	Composite	3.31	9.3	3.90	1/4

All tools performance rated @ 90 psi / 620 kPa air pressure.
 Standard Equipment: Applicable collet, collet wrenches
 Minimum Hose I.D.: 5/16 in / 7.9 mm

216 Series - Grinder - Heavy Duty Head - 200 Series Collet

11,500 - 16,500 RPM 0.7 hp (0.4 kW)

- Rugged and durable aluminum housing
- Designed for heavy industries such as shipbuilding, foundries, metal fabrication, etc.
- Robust angle head design provides excellent durability



Model	Collet Size	Exhaust	Free Speed	Abrasive Capacity Grinder	Type Housing	Weight	Length	Head Height	Air Inlet Size
			r/min			Lb	in	in	in
216GLF-115A-C4	1/4 in	Front	11500	1" Carbide Burr	Aluminum	2.43	7.1	2.20	1/4
216GLFC-165A-C4	1/4 in	Rear	16500	3/4" Carbide Burr	Aluminum	1.76	9.1	2.20	1/4
216GLSC-165A-C4	1/4 in	Side	16500	3/4" Carbide Burr	Aluminum	1.76	9.1	2.20	1/4

All tools performance rated @ 90 psi / 620 kPa air pressure.
Standard Equipment: Applicable collet, collet wrenches
Minimum Hose I.D.: 1/4 in / 4.8 mm

236 Series - Heavy Duty Head - 200 Series Collet

11,500 - 16,500 RPM 0.8 hp (0.6 kW)

- Rugged and durable aluminum housing
- Designed for heavy industries such as shipbuilding, foundries, metal fabrication, etc.
- Robust angle head design provides excellent durability



Model	Collet Size	Exhaust	Free Speed	Abrasive Capacity Grinder	Type Housing	Weight	Length	Head Height	Air Inlet Size
			r/min			Lb	in	in	in
236GLF-115A-C4	1/4 in	Front	11500	1" (25mm) Carbide Burr, 2" (50mm) Mounted Wheel	Aluminum	2.65	7.6	2.20	1/4
236GLR-115A-C4	1/4 in	Rear	11500	1" (25mm) Carbide Burr, 2" (50mm) Mounted Wheel	Aluminum	2.2	8.3	2.20	1/4
236GLFC-165A-C4	1/4 in	Front	16500	3/4" Carbide Burr	Aluminum	1.98	9.6	2.20	1/4
236GLSC-115A-C4	1/4 in	Side	11500	1" (25mm) Carbide Burr, 2" (50mm) Mounted Wheel	Aluminum	1.98	9.6	2.20	1/4

All tools performance rated @ 90 psi / 620 kPa air pressure.
Standard Equipment: Applicable collet, collet wrenches
Minimum Hose I.D.: 5/16 in / 7.9 mm

12-27 and 10-27 Series - Die Grinder - Heavy Duty Head - 200 Series Collet

6,000 - 11,000 RPM 0.9 hp (0.67 kW)

- 12L Composite housing 10L Aluminum Housing
- Front, side and rear exhaust models available
- Robust design perfectly suited for industrial applications



Model	Collet Size	Exhaust	Free Speed	Abrasive Capacity Grinder	Type Housing	Weight	Length	Head Height	Air Inlet Size
			r/min			Lb	in	in	in
10L2752-01	1/4 in	Front		1" Carbide Burr, 2" Mounted Wheel	Aluminum	3.75	8.7	3.90	1/4
12L2750-01	1/4 in	Side	6000	1" Carbide Burr, 1" Mounted Wheel	Composite	3.31	9.8	3.90	1/4
12L2780-01	1/4 in	Rear	6000	3/4" Carbide Burr, 2" Mounted Wheel	Composite	3.31	9.8	3.90	1/4
12L2752-01	1/4 in	Side	11000	3/4" Carbide Burr, 2" Mounted Wheel	Composite	3.31	9.8	3.90	1/4
12L2782-01	1/4 in	Rear	11000	3/4" Carbide Burr, 2" Mounted Wheel	Composite	3.31	9.8	3.90	1/4

All tools performance rated @ 90 psi / 620 kPa air pressure.
 Standard Equipment: Applicable collet, collet wrenches
 Minimum Hose I.D.: 5/16 in / 7.9 mm

12-27 and 10-27 Series - 300 Series and Universal Collet

18,000 RPM 0.9 hp (0.67 kW)

- 12L Composite housing 10L Aluminum Housing
- Powerful motor with rear exhaust
- Robust design perfectly suited for industrial applications
- Standard 3" | 75mm extension



Model	Top Seller	Collet Size	Exhaust	Free Speed	Abrasive Capacity Grinder	Abrasive Capacity Sander	Type Housing	Weight	Length	Head Height	Air Inlet Size
				r/min				Lb	in	in	in
10L2778-36		1/4 in	Rear		3/4" Carbide Burr, 1-1/4" Mounted Wheel		Aluminum	2.43	10.5		1/4
10L2778-45		1/4 in	Rear		3/4" Carbide Burr, 1-1/4" Mounted Wheel		Aluminum	2.43	10.5		1/4
12L2777-36		1/4 in	Rear	12000	3/4" Carbide Burr, 1.25" Mounted Wheel	4" (100mm) Sanding/ Polishing Disc	Composite	2.2	10.5	2.90	1/4
12L2776-36		1/4 in	Rear	13500	3/4" Carbide Burr, 1.25" Mounted Wheel	4" (100mm) Sanding/ Polishing Disc	Composite	2.2	10.5	2.90	1/4
12L2718-36		1/4 in	Rear	18000	3/4" Carbide Burr, 1.25" Mounted Wheel	4" (100mm) Sanding/ Polishing Disc	Composite	1.98	8	2.90	1/4
12L2778-36		1/4 in	Rear	14500	3/4" Carbide Burr, 1.25" Mounted Wheel	4" (100mm) Sanding/ Polishing Disc	Composite	2.2	10.5	2.90	1/4

All tools performance rated @ 90 psi / 620 kPa air pressure.
 Standard Equipment: Applicable collet, collet wrenches
 Minimum Hose I.D.: 5/16 in / 7.9 mm

216 Series - Grinder - Heavy Duty Head - Right Angle - Depressed Center Wheel

11,500 RPM 0.6 hp (0.4 kW)

- Rugged and durable aluminum housing
- Robust and long lasting angle head for the most demanding applications
- Powerful motor stays durable in the harshest environments



Model	Exhaust	Free Speed	Abrasive Capacity Grinder	Type Housing	Spindle Size	Weight	Length	Head Height	Air Inlet Size
		r/min				Lb	in	in	in
216GLF-115A-D3T45	Front	11500	4.5" (115mm) Type 27	Aluminum	3/8" - 24 e	2.65	7.1	3.20	1/4
216GLF-115A-D3T4	Front	11500	4" (100mm) Type 27	Aluminum	3/8" - 24 e	2.65	7.1	3.20	1/4
216GLF-115A-W3T4	Front	11500	4" (100mm) Type 1	Aluminum	3/8" - 24 e	2.65	7.1	3.20	1/4

All tools performance rated @ 90 psi / 620 kPa air pressure.
Minimum Hose I.D.: 5/16 in / 7.9 mm
Standard Equipment: Wheel guard, wheel adapter, spindle wrench, Operating instructions & service manual

216 Series - Grinder - Extended Head - Right Angle - Depressed Center Wheel

13,500 RPM 0.6 hp (0.4 kW)

- Rugged and durable aluminum housing
- Extended head for better reach and accessibility
- Lock-off lever for safe operation



Model	Top Seller	Exhaust	Free Speed	Abrasive Capacity Grinder	Type Housing	Spindle Size	Weight	Length	Head Height	Air Inlet Size
			r/min				Lb	in	in	in
216GLFB-135A-W3T4		Front	13500	4" (100mm) Type 1	Aluminum	3/8" - 24 e	2.2	9.6	2.20	1/4
216GLFB-135A-D3T4		Front	13500	4" (100mm) Type 27	Aluminum	3/8" - 24 e	2.65	9.1	2.20	1/4
216GLSB-135A-D3T4		Side	13500	4" (100mm) Type 27	Aluminum	3/8" - 24 e	2.43	9.1	2.20	1/4
216GLSB-135A-W3T4		Side	13500	4" (100mm) Type 1	Aluminum	3/8" - 24 e	2.43	9.1	2.20	1/4

All tools performance rated @ 90 psi / 620 kPa air pressure.
Minimum Hose I.D.: 5/16 in / 7.9 mm
Standard Equipment: Wheel guard, wheel adapter, spindle wrench, Operating instructions & service manual

Grinders

12-27 and 10-27 Series - Die Grinder - Heavy Duty Head

14,500 RPM 0.9 hp (0.67 kW)

- 12L Ergonomic composite housing, 10L Aluminium Housing
- Durable and low profile angle head
- Low vibration and high output motor provides superior productivity



Model	Top Seller	Exhaust	Free Speed	Abrasive Capacity Grinder	Type Housing	Spindle Size	Weight	Length	Air Inlet Size
			r/min				Lb	in	in
12L2714-28		Rear	14500	4" (100mm) Type 1	Composite	3/8"	3.31	8	1/4
12L2718-28		Rear	18000	4" (100mm) Type 1	Composite	3/8"	3.31	8	1/4
10K2738-28		Front		4" Cut-Off Wheel	Aluminum				1/4
10L2778-28		Rear		4" Type 1 Cut-Off Wheel	Aluminum		3.31	10.9	1/4
12L2777-28OH		Rear		4" Type 1 Cut-Off Wheel	Composite		3.31	10.9	1/4
12L2778-28		Rear		4" Type 1 Cut-Off Wheel	Composite		3.31	10.9	1/4

All tools performance rated @ 90 psi / 620 kPa air pressure.
Minimum Hose I.D.: 1/2 in / 12.7 mm
Standard Equipment: Wheel guard and flange wrench

25 Series - Grinder - Governed - Right Angle

6,000 - 8,500 RPM 1.4 hp (1.3 kW)

- Rugged and durable aluminum housing
- Powerful and robust motor with side exhaust
- Heavy duty angle head designed to outperform and outlast



Model	Exhaust	Free Speed	Abrasive Capacity Grinder	Type Housing	Spindle Size	Weight	Length	Head Height	Air Inlet Size
		r/min				Lb	in	in	in
25GL-60A-W5T7	Side	6000	7" (180mm) Type 1	Aluminum	5/8" - 11 e	5.5	10	4.00	3/8
25GL-60A-D5T7	Side	6000	7" (180mm) Type 27	Aluminum	5/8" - 11 e	5.5	10	4.00	3/8
25GL-77A-D5T7	Side	7700	7" (180mm) Type 27	Aluminum	5/8" - 11 e	5.5	10	4.00	3/8
25GL-85A-D5T7	Side	8500	7" (180mm) Type 27	Aluminum	5/8" - 11 e	5.5	10	4.00	3/8

All tools performance rated @ 90 psi / 620 kPa air pressure.
Minimum Hose I.D.: 3/8 in / 9.5 mm
Standard Equipment: Wheel guard, flange wrench, Operating instructions & service manual

2260 Series - Right Angle Grinder

8,400 RPM 2.2 hp (1.6 kW)

- High performance 2.2HP motor, Governed at 8,000 rpm
- Available with 6", 7" guard options
- Reversible safety lever throttle
- Dual auxiliary handle positions
- Maximum material removal for a right angle grinder



Model	Top Seller	Exhaust	Free Speed	Abrasive Capacity Grinder	Type Housing	Spindle Size	Weight	Length	Head Height	Air Inlet Size
			r/min				Lb	in	in	in
2260AGL-06		Side	8400	6" (150mm), Type 27/42	Aluminum	5/8" - 11 e	7.3	12.1	2.90	1/2
2260AGL-07		Side	8400	7" (180mm), Type 27/42	Aluminum	5/8" - 11 e	7.3	12.1	2.90	1/2

All tools performance rated @ 90 psi / 620 kPa air pressure.
Minimum Hose I.D.: 3/4 in / 19 mm
Standard Equipment: Wheel guard, adapters, spindle wrenches, operating instructions & service manuals

236 Series - Grinder - Right Angle - Heavy Duty Head

- Rugged and durable aluminum housing
- Heavy duty and extended head models available
- Designed for heavy duty material removal applications



Model	Top Seller	Exhaust	Free Speed	Abrasive Capacity Grinder	Type Housing	Spindle Size	Weight	Length	Head Height	Air Inlet Size
			r/min				Lb	in	in	in
236GLF-115A-W3T4		Front	11500	4" (100mm) Type 1	Aluminum	3/8" - 24 e	3.09	7.6	3.20	1/4
236GLR-115A-W3T4		Rear	11500	4" (100mm) Type 1	Aluminum	3/8" - 24 e	2.43	8.3	3.20	1/4
236GLS-115A-W3T4		Side	11500	4" (100mm) Type 1	Aluminum	3/8" - 24 e	2.43	8.3	3.20	1/4
236GLSB-115A-W3T4		Side	11500	4" (100mm) Type 1	Aluminum	3/8" - 24 e	1.98	9.6	3.20	1/4
236GLF-115A-D3T4		Front	11500	4" (100mm) Type 27	Aluminum	3/8" - 24 e	3.09	7.6	3.20	1/4
236GLR-115A-D3T4		Rear	11500	4" (100mm) Type 27	Aluminum	3/8" - 24 e	2.43	8.3	3.20	1/4
236GLFB-135A-D3T4		Front	13500	4" (100mm) Type 27	Aluminum	3/8" - 24 e	1.98	9.6	2.20	1/4
236GLRB-135A-D3T4		Rear	13500	4" (100mm) Type 27	Aluminum	3/8" - 24 e	1.98	7.6	2.20	1/4
236GLSB-135A-D3T4		Side	13500	4" (100mm) Type 27	Aluminum	3/8" - 24 e	1.98	9.6	2.20	1/4

All tools performance rated @ 90 psi / 620 kPa air pressure.
Minimum Hose I.D.: 1/2 in / 12.7 mm
Standard Equipment: Wheel guard and flange wrench

C31 Right Angle Grinder

12,000 - 13500 RPM 1.7 hp (1.25 kW)

- High-performance 1.7Hp motor delivers maximum power
- Quick change spindle lock for fast and easy abrasive changes
- Quieter operation with rear exhaust overhose standard
- Ergonomic, anti-vibration handle for increased comfort and less operator fatigue
- Dual-layer, high-impact composite housing for extreme durability
- Versatile 270° adjustable guard for easy access to tight spaces



**TOP
SELLER**

Model	Top Seller	Free Speed	Exhaust	Wheel Size	Weight	Head Height	Air Inlet Size	Air Consumption at Free Speed	Air Consumption at Load
		r/min		in	Lb	in	in	Scfm	l/s
C3120A45-58OH		12000	Rear	4.5	3.98	3.03	3/8	35.7	31
C3120A45-M14OH		12000	Rear	4.5	3.98	3.03	3/8	35.7	31
C3120A5-58OH		12000	Rear	5	4.05	3.03	3/8	35.7	31
C3120A5-M14OH		12000	Rear	5	4.05	3.03	3/8	35.7	31
C3135A4-38OH		13500	Rear	4	3.78	3.03	3/8	49.5	32

236 Series - Grinder - Extended Head

13,500 RPM 0.8 hp (0.6kW)

- Rugged and durable aluminum housing
- Heavy duty and extended head models available
- Designed for heavy duty material removal applications



Model	Top Seller	Exhaust	Free Speed	Abrasive Capacity Grinder	Type Housing	Spindle Size	Weight	Length	Air Inlet Size
			r/min				Lb	in	in
236GLFB-135A-W3T4		Front	13500	4" (100mm) Type 1	Aluminum	3/8" - 24 e	1.98	9.6	1/4
236GLRB-135A-W3T4		Rear	13500	4" (100mm) Type 1	Aluminum	3/8" - 24 e	1.98	7.6	1/4
236GLSB-135A-W3T4		Side	13500	4" (100mm) Type 1	Aluminum	3/8" - 24 e	1.98	9.6	1/4

All tools performance rated @ 90psi / 620 kPa air pressure.
 Minimum Hose I.D.: 1/2in / 12.7mm
 Standard Equipment: Wheel guard and flange wrench

236 Series - Cone/Plug Wheel - Inline

18,000 - 24,000 RPM 0.9 hp (0.7 kW)

- Rugged and durable aluminum housing
- Side and rear exhaust models available



25 Series - Grinder - Extended

14,000 - 18,000 RPM 1.4 hp (1.3 kW)

- Rugged and durable aluminum housing
- Governor speed control maintains RPM under load
- Safety- lock throttle lever prevents accidental start up



Model	Top Seller	Exhaust	Free Speed	Abrasive Capacity Grinder	Type Housing	Spindle Size	Weight	Length	Air Inlet Size
			r/min				Lb	in	in
25GELC-120-W3T25		Side	12000	2.5" (63mm) Type 1	Aluminum	3/8" - 24 e	3.31	14.4	3/8
25GELC-140-P3T		Side	14000	2" (50mm) Cone or Plug Wheel	Aluminum	3/8" - 24 e	3.09	14.5	3/8
25GELC-180-P3T		Side	18000	2" (50mm) Cone or Plug Wheel	Aluminum	3/8" - 24 e	3.09	14.5	3/8
25GELC-180-P5T		Side	18000	2" (50mm) Cone or Plug Wheel	Aluminum	5/8" - 11 e	3.31	14.9	3/8
25GELC-120-W3T3		Side	12000	3" (75mm) Type 1	Aluminum	3/8" - 24 e	3.75	14.4	3/8
25GELC-120-W3T4		Side	12000	4" (100mm) Type 1	Aluminum	3/8" - 24 e	3.75	14.4	3/8
25GELC-180-W3T3		Side	18000	3" (75mm) Type 1	Aluminum	3/8" - 24 e	3.75	14.9	3/8

All tools performance rated @ 90 psi / 620 kPa air pressure.
 Minimum Hose I.D.: 3/8 in / 9.5 mm
 Standard Equipment: Wheel guard, flange wrench, Operating instructions & service manual

236 Series - Grinder - Inline

18,000 RPM 0.9 hp (0.7 kW)

- Rugged and durable aluminum housing
- Side and rear exhaust models available



Model	Exhaust	Free Speed	Abrasive Capacity Grinder	Type Housing	Spindle Size	Weight	Length	Air Inlet Size
		r/min				Lb	in	in
236GLR-180-W3T4	Rear	18000	4" (100mm) Type 1	Aluminum	3/8" - 24 e	1.76	7.3	1/4

25 Series - Grinder - Extended

12,000 - 18,000 RPM 1.4 hp (1.0 kW)

- Powerful motor for all cut-off operations
- Governed motor with side exhaust
- Rugged and durable for any environment



Model	Exhaust	Free Speed	Abrasive Capacity Grinder	Type Housing	Spindle Size	Weight	Length	Air Inlet Size
		r/min				Lb	in	in
25GELC-140-W3T3	Side	14000	3" (75mm) Type 1	Aluminum	3/8" - 24 e	3.75	14.5	3/8
25GL-120-W3T4*	Side	12000	4" (100mm) Type 1	Aluminum	3/8" - 24 e	3.09	10	3/8

All tools performance rated @ 90 psi / 620 kPa air pressure.
 Minimum Hose I.D.: 3/8 in / 9.5 mm
 Standard Equipment: Wheel guard, flange wrench, Operating instructions & service manual
 * Non-extended version

500B Series - Horizontal Grinder - Rotatable Exhaust

6,000 RPM 1.9 hp (1.4 kW)

- Safety lever or spade handle available
- Suitable for the most demanding horizontal grinding applications
- Robust and efficient design trusted for decades



Model	Exhaust	Free Speed	Abrasive Capacity Grinder	Type Housing	Spindle Size	Weight	Length	Air Inlet Size
		r/min				Lb	in	in
560BHL-16	Side	6000	6" x 1" (150mm x 25mm) Type 1	Steel	5/8" - 11 e	10.8	18.4	1/2
560BHX-16	Side	6000	6" x 1" (150mm x 25mm) Type 1	Steel	5/8" - 11 e	11.7	18.8	1/2

All tools performance rated @ 90 psi / 620 kPa air pressure.
 Minimum Hose I.D.: 1/2 in / 12.7 mm
 Standard Equipment: Wheel guard and flange wrench

1700 Series - Horizontal Grinder - Lock-Off Lever Throttle

6,000 RPM 3.1 hp (2.3 kW)

- Spade handle availability
- Safety- lock throttle lever prevents accidental start up
- High output motor designed to tackle the toughest material removal jobs
- Test 9/2/2022 11:15am



Model	Exhaust	Free Speed	Abrasive Capacity Grinder	Type Housing	Spindle Size	Weight	Length	Air Inlet Size
		r/min				Lb	in	in
1760HL-16	Side	6000	6" x 1" (150mm x 25mm) Type 1	Steel	5/8" - 11 e	14.6	19.6	1/2

All tools performance rated @ 90 psi / 620 kPa air pressure.
Minimum Hose I.D.: 1/2 in / 12.7 mm
Standard Equipment: Wheel guard and flange wrench

Grinders

1900 Series - Inline

- Governed air motor- controlled to maintain RPM under heavy load
- High output motor designed to tackle the toughest material removal jobs
- Safety- lock throttle lever prevents accidental start up



Model	Exhaust	Free Speed	Abrasive Capacity Grinder	Type Housing	Spindle Size	Weight	Length	Air Inlet Size
		r/min				Lb	in	in
1960HG-16	Side	6000	6" x 1" (150mm x 25mm) Type 1	Aluminum	5/8" - 11 e	16.8	21.4	1/2
1960HL-16	Rear	6000	6" x 1" (150mm x 25mm) Type 1	Aluminum	5/8" - 11 e	16.8	21.4	1/2

All tools performance rated @ 90 psi / 620 kPa air pressure.
Minimum Hose I.D.: 1/2 in / 12.7 mm
Standard Equipment: Wheel guard and flange wrench

3060 Series - Vertical Grinder

6,000 RPM 3.0 hp (2.3 kW)

- Powerful, governed motor
- Ideally suited for the most rugged environments
- Maximum material removal in an ergonomic package



Model	Top Seller	Exhaust	Free Speed	Abrasive Capacity Grinder	Type Housing	Spindle Size	Weight	Air Inlet Size
			r/min				Lb	in
3060AVL-06		Side	6000	6" (150mm) Type 11	Aluminum	5/8" - 11 e	10.1	1/2
3060AVL-07		Side	6000	7" (180mm) Type 27	Aluminum	5/8" - 11 e	9.7	1/2
3060AVL-09		Side	6000	9" (230mm) Type 27	Aluminum	5/8" - 11 e	10.4	1/2

All tools performance rated @ 90 psi / 620 kPa air pressure.

Minimum Hose I.D.: 3/4 in / 19 mm

Standard Equipment: Wheel guard, adapters, spindle wrenches, operating instructions & service manuals

4060 Series - Vertical Grinder

6,000 RPM 4.0 hp (3.1 kW)

- Maximum material removal in any application
- Powerful motor delivering ultimate torque



Model	Top Seller	Exhaust	Free Speed	Abrasive Capacity Grinder	Type Housing	Spindle Size	Weight	Air Inlet Size
			r/min				Lb	in
4060AVL-06		Side	6000	6" (150mm) Type 11	Aluminum	5/8" - 11 e	11.7	1/2
4060AVL-07		Side	6000	7" (180mm) Type 27	Aluminum	5/8" - 11 e	11	1/2
4060AVL-09		Side	6000	9" (230mm) Type 27	Aluminum	5/8" - 11 e	11.9	1/2

All tools performance rated @ 90 psi / 620 kPa air pressure.

Minimum Hose I.D.: 3/4 in / 19 mm

Standard Equipment: Wheel guard, adapters, spindle wrenches, operating instructions & service manuals

Wheel Guards



Part Number	Wheel Type	Tool Series	Size
202245	Type 1 Wheel	236,25	4" 100mm
202278	Type 1 Wheel	236, 25	3" 75mm
865786	Type 1 Wheel	15H	3" 75mm
865988	Type 1 Wheel	15H	4" 100mm
865993	Type 1 Wheel	500BH	6" 150mm
881608	Type 1 Wheel	500BH	4" 100mm
T50-1000430	Type 1 Wheel, Type 27 Wheel	C3 Grinder	4" 100mm
T50-1000455	Type 1 Wheel, Type 27 Wheel	C3 Grinder	4 1/2" 100mm
T50-1000467	Type 1 Wheel, Type 27 Wheel	C3 Grinder	5" 125mm
202226	Type 27 Wheel	216RA, 236RA	3" 75mm
202227	Type 27 Wheel	216RA, 236RA	4" 100mm
203142	Type 27 Wheel	216RA, 236RA	5" 125mm
203382	Type 27 Wheel	236V	4" 100mm
207751PT	Type 27 Wheel	3060AVL, 4060AVL	7" 180mm
207752PT	Type 27 Wheel	3060AVL, 4060AVL	9" 230mm
208011PT	Type 27 Wheel	2260AGL	6" 150mm
208012PT	Type 27 Wheel	2260AGL	7" 180mm
889208	Type 27 Wheel	216RA, 236RA	4" 100mm
849760	Type 28 Wheel	25V	7" 180mm
865986	Type 28 Wheel	25RA	7" 180mm
207750PT	Type 6 & 11 (Cup) Wheel	3060AVL, 4060AVL	6" 150mm
861893	Type 6 & 11 (Cup) Wheel		6" 150mm

Wheel Guards

For Use with 10 and 12 Series Dotco Grinders Only

- For Type 1 and Type 27 abrasives and Cup Wheels only
- Available in various sizes
- Meets all safety standards



Part Number	Wheel Type	Abrasive Capacity Grinder	Tool Series
14-1018	Type 1 (Cut-Off) Wheel Guards	3" x 3/16"	12-10
14-1258	Type 1 (Cut-Off) Wheel Guards	3" x 3/16"	12-22, 12-27 (LP)
14-1259	Type 1 (Cut-Off) Wheel Guards	4" x 3/16"	12-22, 12-27 (LP)
14-2623	Type 1 (Cut-Off) Wheel Guards	4" x 3/16"	12-25
14-2624	Type 1 (Cut-Off) Wheel Guards	3" x 3/16"	12-20, 12-25
14-2097	Type 1 Wheel Guards	3" x 1/2"	12-26
14-3011	Type 1 Wheel Guards	3" x 1"	12-41
14-4074	Type 1 Wheel Guards	4" x 1"	12-41
14-5012	Type 1 Wheel Guards	6" x 1"	12-51
14-2123	Type 27 Depressed Center Wheel Guards	7"	12-42
14-2152	Type 27 Depressed Center Wheel Guards	5"	12-22, 12-27
14-2252	Type 27 Depressed Center Wheel Guards	5"	12-27
14-2562	Type 27 Depressed Center Wheel Guards	4"	12-22, 12-27
14-2564	Type 27 Depressed Center Wheel Guards	3"	12-28 (NG)
14-2593	Type 27 Depressed Center Wheel Guards	3"	12-22, 12-27 (LP)
14-2594	Type 27 Depressed Center Wheel Guards	4"	12-22, 12-27 (LP)
14-2672	Type 27 Depressed Center Wheel Guards	4.5"	12-27

10/12-04 Series HG Collets 12R0380 Collets

Dotco Pencil Grinder collet inserts

- Used on 10 and 12 series Pencil grinders
- Fit various Burr sizes
- Available in Metric and Imperial sizes

Part Number	Collet Size	Tool Termination	Capacity Maximum	Tool Series	Length
					in mm
01-0100	1/8 in	-18	1/8 in	12-03	
01-0102	3/32 in	-16	3/32 in	12-03	
01-0148	3 mm	-13	3 mm	12-03	
100	1/8 in	-08 or -18	1/8 in	10-04, 10-90, 12-04	321 mm
103	1/16 in	-04 or -14	1/16 in	10-04, 10-90	
131	2.35 mm	-02 or -12	2.35 in	10-04, 10-90	
146	1 mm	-00 or -10	1 mm	10-04, 10-90	
148	3 mm	-03 or -13	3 mm	10-04, 10-90, 12-04	
GL09523EM	3/32 in	-06 or -16	3/32 in	10-04, 10-90	

Universal Collets

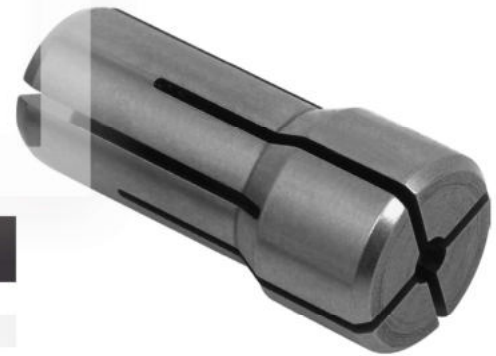
- For use with 12-05, 12-22, 12-27 grinders



Model	Collet Size	Tool Termination	Tool Series
	in		
7808	1/4 in	-45	12-05, 12-22, 12-27
7809	1/8 in	-4508	12-05, 12-22, 12-27
7811	6 mm	-45M6	12-05, 12-22, 12-27
7812	3/16 in	-4512	12-05, 12-22, 12-27
LBD3300	3 mm	-45M3	12-05, 12-22, 12-27

Termination 01 - Series 200 Collets

- Series 200 Collet



Model	Collet Size	Tool Termination	Tool Series
	in		
204	1/8 in	-0108	12-20, 12-25, 12-21, 12-22, 12-26, 12-27, 12-31
205	5/32 in	-0110	12-20, 12-25, 12-21, 12-22, 12-26, 12-27, 12-31
206	3/16 in	-0112	12-20, 12-25, 12-21, 12-22, 12-26, 12-27, 12-31
207	7/32 in	-0114	12-20, 12-25, 12-21, 12-22, 12-26, 12-27, 12-31
208	1/4 in	-01	12-20, 12-25, 12-21, 12-22, 12-26, 12-27, 12-31
209	9/32 in	-0118	12-20, 12-25, 12-21, 12-22, 12-26, 12-27, 12-31
210	5/16 in	-0120	12-20, 12-25, 12-21, 12-22, 12-26, 12-27, 12-31
212	3/8 in	-0124	12-20, 12-25, 12-21, 12-22, 12-26, 12-27, 12-31
213	6 mm	-01M6	12-20, 12-25, 12-21, 12-22, 12-26, 12-27, 12-31
216	6 mm	-01M8	12-20, 12-25, 12-21, 12-22, 12-26, 12-27, 12-31

Series 300 Collets

Dotco Die Grinder collet Inserts

- Use with 10 and 12 Series Dotco Grinders
- Fit various Burr sizes
- Available in Metric and Imperial sizes



Model	Collet Size	Tool Termination	Tool Series
	in		
304	1/8 in	-3608	10-95, 12-10, 12-11, 12-12, 12-20, 12-25, 12-05, 12-22, 12-27
306	3/16 in	-3612	12-10, 12-11, 12-12, 12-20, 12-25, 12-05, 12-22, 12-27
308	1/4 in	-36	10-95, 12-10, 12-11, 12-12, 12-20, 12-25, 12-05, 12-22, 12-27
XJG38	3/64 in	-3603	12-10, 12-11, 12-12, 12-20, 12-25, 12-05, 12-22, 12-27
XJG44	5/64 in	-3605	12-10, 12-11, 12-12, 12-20, 12-25, 12-05, 12-22, 12-27
XJG54	5/32 in	-3610	12-10, 12-11, 12-12, 12-20, 12-25, 12-05, 12-22, 12-27
XJG68	6 mm	-36M6	12-10, 12-11, 12-12, 12-20, 12-25, 12-05, 12-22, 12-27

Termination 36 - Series 300 Collets

- Series 300 Collet



Model	Collet Size	Tool Termination	Tool Series
	in		
301	3/64 in	-3603	12-10, 12-11, 12-12, 12-20, 12-25
302	5/64 in	-3605	12-10, 12-11, 12-12, 12-20, 12-25
303	3/32 in	-3606	12-10, 12-11, 12-12, 12-20, 12-25
304	1/8 in	-3608	10-95, 12-10, 12-11, 12-12, 12-20, 12-25
305	5/32 in	-3610	12-10, 12-11, 12-12, 12-20, 12-25
306	3/16 in	-3612	12-10, 12-11, 12-12, 12-20, 12-25
307	7/32 in	-3612	12-10, 12-11, 12-12, 12-20, 12-25
308	1/4 in	-36	10-95, 12-10, 12-11, 12-12, 12-20, 12-25
310	6 mm	-36M3	12-10, 12-11, 12-12, 12-20, 12-25
311	3 mm	-36M6	12-10, 12-11, 12-12, 12-20, 12-25, 12-05, 12-22, 12-27

Termination 62 - Series K Collets

- Series K Collet

Model	Collet Size	Tool Termination	Tool Series
	in		
120	1/8 in	-6208	10-43, 11-43
121	3/16 in	-6212	10-43, 11-43
122	1/4 in	-6216	10-43, 11-43
123	5/16 in	-6220	10-43, 11-43
124	3/8 in	-62	10-43, 11-43
125	7/16 in	-6228	10-43, 11-43
126	1/2 in	-6232	10-43, 11-43
127	9/16 in	-6270	10-43, 11-43
134	8 mm	-62M8	10-43, 11-43
135	10 mm	-6270	10-43, 11-43



Spiral Cool Sanding Kits

Sanding backing Pads for Grinders

Model	Description	Tool Series	Size
861655	Grinder Accessories	25RA, 15V, 1200V, 2260AGL	7"
861792	Grinder Accessories	216RA, 236RA, C3	5"



Type 27 & 28 Wheel Adapter Kit

Used for with Type 27 & Type 28 Wheels



Model	Description	Tool Series
849269	Grinder Accessories	15V, 1200V, 1700V, 1900V, 3060V, 4060V

Long Collet Guard

For us with 12-10 grinders

- Completely covers the collet
- For us with 12-10 grinders
- Limits the diameter of the cutting tool used to 5/8"

Model	Description
1020PT	Long Collet Guard



Noise Suppressor Guard

For use with 12-10 front exhaust tools only

- Completely covers the collet
- For use with 12-10 front exhaust tools only
- Limits the diameter of the cutting tool used to 1/2"
- Air is exhausted at an angle

Model	Description	Tool Series
14-2188	Collet Guard	12-10 Front Exhaust



Turbine Collet Guard

For use with 10R9000 grinders

- Slips on and off tools with a slight twist



Model	Description	Tool Series
14-1280	Grinder Accessories	10-9000

Overhose for 236 Grinders

Overhose for Cleoc 236 Series Grinders

- For use with Rear Exhaust models only
- Pipes air away from operator
- Reduces Noise levels



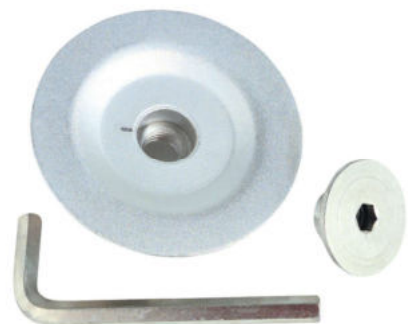
Model	Description
869204	Overhose Adapter
869580	Exhaust Overhose

Rear exhaust models only

Depressed Center Wheel Adapter

Adaptor Kit for 7" and 9" Depressed Center Wheels

- Adapt a 7/8" arbor abrasive to a 5/8"-11 threaded spindle



Model	Description
14-5008	Adapter and Washer

12LF Series - Sander - Right Angle - 300 Series Collet - Cleco Dotco

12,000 - 20,000 RPM 0.4 hp (0.29 kW)

- Composite housing
- Wide array of speeds; front and rear exhaust models available
- Ergonomic and balanced design minimized operator fatigue
- Tool not supplied with backing pad as shown



Model	Top Seller	Collet Size	Exhaust	Free Speed	Abrasive Capacity Grinder	Abrasive Capacity Sander	Type Housing	Weight	Length	Head Height	Air Inlet Size
				r/min				Lb	in	in	in
12LF200-32		1/4 in-28i	Front	12000		3" (75 mm) Sanding/ Polishing disc	Composite	1.1	6.6	2.70	1/4
12LF201-32		1/4 in-28i	Front	20000		2" (50 mm) Sanding/ Polishing disc	Composite	1.1	6.6	2.70	1/4
12LF280-36		1/4 in	Rear	12000	1/2" Carbide Burr, 1" Mounted Wheel	3" (75 mm) Sanding/ Polishing disc	Composite	1.1	6.6	2.70	1/4
12LF281-36		1/4 in	Rear	20000	1/2" Carbide Burr, 1" Mounted Wheel	2" (50 mm) Sanding/ Polishing disc	Composite	1.1	6.6	2.70	1/4
12LF201-36		1/4 in	Front	20000	1/2" Carbide Burr, 1" Mounted Wheel	2" (50 mm) Sanding/ Polishing disc	Composite	1.1	6.6	2.70	1/4
12LF200-36		1/4 in	Front	12000	1/2" Carbide Burr, 1" Mounted Wheel	3" (75 mm) Sanding/ Polishing disc	Composite	1.1	6.6	2.70	1/4

All tools performance rated @ 90 psi / 620 kPa air pressure.
 Standard Equipment: Applicable collet, collet wrenches
 Minimum Hose I.D.: 1/4 in / 4.8 mm

10LF Series - Sander - Right Angle - 300 Series Collet - Cleco Dotco

12,000 - 20,000 RPM 0.4 hp (0.29 kW)

- Aluminum housing for high durability
- Wide array of speeds; front and rear exhaust models available
- Ergonomic and balanced design minimized operator fatigue
- Tool not supplied with backing pad as shown



Model	Top Seller	Collet Size	Exhaust	Free Speed	Abrasive Capacity Grinder	Abrasive Capacity Sander	Type Housing	Weight	Length	Head Height	Air Inlet Size
				r/min				Lb	in	in	in
10LF200-32		1/4 in-28i	Front	12000		3" (75 mm) Sanding/Polishing Disc	Aluminum	1.1	6.6	2.90	1/4
10LF200-36		1/4 in	Front	12000	1/2" Carbide Burr, 1" Mounted Wheel	3" (75 mm) Sanding/Polishing Disc	Aluminum	1.1	6.6	2.70	1/4
10LF280-36		1/4 in	Rear	12000	1/2" Carbide Burr, 1" Mounted Wheel	3" (75 mm) Sanding/Polishing Disc	Aluminum	1.1	6.6	2.70	1/4
10LF281-36		1/4 in	Rear	20000	1/2" Carbide Burr, 1" Mounted Wheel	2" (50 mm) Sanding/Polishing Disc	Aluminum	1.1	6.6	2.70	1/4
10LF201-36		1/4 in	Front	20000	1/2" Carbide Burr, 1" Mounted Wheel	2" (50 mm) Sanding/Polishing Disc	Aluminum	1.1	6.6	2.70	1/4
10LF201-32		1/4 in-28i	Front	20000		2" (50 mm) Sanding/Polishing Disc	Aluminum	1.1	6.6	2.90	1/4

All tools performance rated @ 90 psi / 620 kPa air pressure.
 Standard Equipment: Applicable collet, collet wrenches
 Minimum Hose I.D.: 1/4 in / 4.8 mm

12-13 Series - Sander - Right Angle - Gearless - 300 Series Collet - Cleco Dotco

20,000 - 30,000 RPM 0.3 hp (0.22 kW)

- Composite housing
- Wide array of speeds offered; front and rear exhaust models available
- Suitable for a wide range of finishing and deburring applications
- Tool not supplied with backing pad as shown



Model	Collet Size	Exhaust	Free Speed	Abrasive Capacity Grinder	Abrasive Capacity Sander	Type Housing	Weight	Length	Head Height	Air Inlet Size
			r/min				Lb	in	in	in
12L1382-36	1/4 in	Rear	20000	1/2" Carbide Burr, 1" Mounted Wheel	2" (50 mm) Sanding/Polishing Disc	Composite	1.1	7.1	3.70	1/4
12L1302-36	1/4 in	Front	20000	1/2" Carbide Burr, 1" Mounted Wheel	2" (50 mm) Sanding/Polishing Disc	Composite	1.1	7.1	3.70	1/4
12L1381-36	1/4 in	Rear	25000	1/2" Carbide Burr, 1" Mounted Wheel	2" (50 mm) Sanding/Polishing Disc	Composite	1.1	7.1	3.70	1/4
12L1300-36	1/4 in	Front	30000	1/2" Carbide Burr, 1" Mounted Wheel	1" (25mm) Sanding/ Polishing Disc	Composite	1.1	7.1	3.70	1/4
12L1380-36	1/4 in	Rear	30000	1/2" Carbide Burr, 1" Mounted Wheel	1" (25mm) Sanding/ Polishing Disc	Composite	1.1	7.1	3.70	1/4
12L1301-36	1/4 in	Front	25000	1/2" Carbide Burr, 1" Mounted Wheel	2" (50 mm) Sanding/Polishing Disc	Composite	1.1	7.1	3.70	1/4

All tools performance rated @ 90 psi / 620 kPa air pressure.
 Standard Equipment: Applicable collet, collet wrenches
 Minimum Hose I.D.: 1/4 in / 4.8 mm

Sanders & Polishers

12-22 Series - Right Angle - Grinder/Sander - 300 Series Collet

18,000 RPM 0.6 hp (0.45 kW)

- Ergonomic composite housing
- Heavy duty low profile head for greater accessibility
- High output motor in a lightweight package
- 3" | 75mm Extended head available



Model	Top Seller	Collet Size	Exhaust	Free Speed	Abrasive Capacity	Abrasive Capacity	Type Housing	Weight	Length	Head Height	Air Inlet Size
				r/min	Grinder	Sander		Lb	in	in	in
12L2277-36		1/4 in	Rear	12000	1/2" Carbide Burr 1" Mounted Wheel	4" (100mm) Sanding/Polishing Disc	Composite	2.2	10	2.70	1/4
12L2218-36		1/4 in	Rear	18000	1/2" Carbide Burr 1" Mounted Wheel	3" (50mm) Sanding/Polishing Disc	Composite	1.76	7.5	2.70	1/4
12L2278-36		1/4 in	Rear	14500	1/2" Carbide Burr 1" Mounted Wheel	4" (100mm) Sanding/Polishing Disc	Composite	2.2	10	2.70	1/4

All tools performance rated @ 90 psi / 620 kPa air pressure.
 Standard Equipment: Applicable collet, collet wrenches
 Minimum Hose I.D.: 5/16 in / 7.9 mm

Sanders & Polishers

12-22 Series - Right Angle - Grinder/Sander - Heavy Duty Head

9,000 RPM 0.6 hp (0.45 kW)

- Ergonomic composite housing
- Heavy duty low profile head for greater accessibility
- high output motor in a lightweight package
- Tool not supplied with backing pad as shown



Model	Exhaust	Free Speed	Abrasive Capacity	Type Housing	Weight	Length	Head Height	Air Inlet Size
		r/min			Sander	Lb	in	in
12L2251-80	Front	9000	5" (125mm) Sanding/Polishing Disc	Composite	3.31	9.3	3.90	1/4

All tools performance rated @ 90psi / 620 kPa air pressure.
 Minimum Hose I.D.: 5/16in / 7.9mm
 Standard Equipment: Applicable collet, collet wrenches

10-27 & 12-27 Series - Heavy Duty Head - Sander/Grinder - 5/8"-11 Threaded Spindle

850 - 11,000 RPM 0.9 hp (0.67 kW)

- Aluminum and Composite housing available
- high output motor for demanding sanding applications
- heavy duty low profile head for superior durability
- Tool not supplied with backing pad as shown



Model	Top Seller	Exhaust	Termination	Free Speed	Abrasive Capacity Grinder	Abrasive Capacity Sander	Type Housing	Spindle Size	Weight	Length	Head Height	Air Inlet Size	Table Sort Order
				r/min					Lb	in	in	in	
10L2784-80		Front	5/8" - 11 e	850		7" (178 mm) Sanding/Polishing Disc	Aluminum		3.09	8.5	3.90	1/4	4
12L2785-80		Front	5/8" - 11 e	1250		7" (178 mm) Sanding/Polishing Disc	Composite		3.97	10.5	3.90	1/4	3
10L2786-80		Front	5/8" - 11 e	1500		7" (178 mm) Sanding/Polishing Disc	Aluminum		3.09	8.5	3.90	1/4	4
10L2760-80		Front	5/8" - 11 e	3300		4" (102 mm) Wire Brush, 6" (152 mm) Buffing Wheel	Aluminum		3.97	9.3	3.90	1/4	1
12L2760-80		Front	5/8" - 11 e	3300		7" (178 mm) Sanding/Polishing Disc	Composite		3.97	10.5	3.90	1/4	2
12L2762-80		Front	5/8" - 11 e	4500		7" (178 mm) Sanding/Polishing Disc	Composite		3.97	10.5	3.90	1/4	3
10L2750-80		Front	5/8" - 11 e	6000		7" (178 mm) Sanding/Polishing Disc	Aluminum		3.09	8.5	3.90	1/4	4
12L2750-80		Front	5/8" - 11 e	6000		7" (178 mm) Sanding/Polishing Disc	Composite		3.31	9.8	3.90	1/4	5
12L2761-80		Front	5/8" - 11 e	6000		7" (178 mm) Sanding/Polishing Disc	Composite		3.97	10.5	3.90	1/4	6
10L2751-80		Front	5/8" - 11 e	9000		5" (127 mm) Sanding/Polishing Disc	Aluminum		3.09	8.5	3.90	1/4	7
12L2751-80		Front	5/8" - 11 e	9000		5" (127 mm) Sanding/Polishing Disc	Composite		3.31	9.8	3.90	1/4	8
10L2752-80		Front	5/8" - 11 e	11000		4" (100mm) Sanding/ Polishing Discs	Aluminum		3.31	8.6	3.90	1/4	10
12L2752-80		Front	5/8" - 11 e	11000		4" (102 mm) Sanding/Polishing Disc	Composite		3.31	9.8	3.90	1/4	9
12L2786-80		Rear			4" Wire Brush, 8" Buffing Wheel		Composite	5/8"-11	3.97	12.5	3.90	1/4	
12L2788-80		Front	5/8" - 11 e	2200		7" (178 mm) Sanding/Polishing Disc	Composite		3.97	10.5	3.90	1/4	3

All tools performance rated @ 90 psi / 620 kPa air pressure.
 Minimum Hose I.D.: 5/16 in / 7.9 mm
 Standard Equipment: Applicable collet, collet wrenches

Sanders & Polishers

C31 Right Angle Sander

- High-performance 1.7Hp motor delivers maximum power
- Quick change spindle lock for fast and easy abrasive changes
- Quieter operation with rear exhaust overhose standard
- Ergonomic, anti-vibration handle for increased comfort and less operator fatigue
- Dual-layer, high-impact composite housing for extreme durability



Model	Top Seller	Exhaust	Free Speed	Spindle Size	Weight	Length	Head Height	Air Inlet Size
			r/min		Lb	in	in	in
C3120ASDR-58OH		Rear	12000	5/8" - 11	4.05	8.95	3.03	3/8

12-12 Series - Belt Sander

12,000 - 20,000 RPM 0.3 hp (0.22 kW)

- Grind, debur, strap polish, blend
- Choice of geared or gearless
- Ergonomic housing reduces cold air transmission to operator



Model	Top Seller	Exhaust	Free Speed	Abrasive Capacity Grinder	Type Housing	Weight	Length	Air Inlet Size
			r/min			Lb	in	in
12L1280-36B2		Rear	12000	1/2" W x 12" L Sanding Belt	Composite	1.32	11.3	1/4
12L1281-36B2		Rear	20000	1/2" W x 12" L Sanding Belt	Composite	1.32	11.3	1/4

All tools performance rated @ 90psi / 620 kPa air pressure.

Minimum Hose I.D.: 1/4in / 4.8mm

Standard Equipment: No.80 and No.120 grit sanding belt or one medium grit non-woven belt, applicable wrenches, grease gun, gear lube

Sanders & Polishers

12LF Series - Belt Sander

12,000 - 20,000 RPM 0.4hp (0.29 kW)

- Grind, debur, strap polish, blend
- Choice of geared or gearless
- Ergonomic housing reduces cold air transmission to operator



Model	Top Seller	Exhaust	Free Speed	Abrasive Capacity Grinder	Type Housing	Weight	Length	Air Inlet Size
			r/min			Lb	in	in
12LF280-36B2		Rear	12000	1/2"W x 12"L Sanding Belt	Composite	1.32	11.3	1/4
12LF281-36B2		Rear	20000	1/2"W x 12"L Sanding Belt	Composite	1.32	11.3	1/4

All tools performance rated @ 90psi / 620 kPa air pressure.

Minimum Hose I.D.: 1/4in / 4.8mm

Standard Equipment: No.80 and No.120 grit sanding belt or one medium grit non-woven belt, applicable wrenches, grease gun, gear lube

12-23 Series - Gearless - Woven or Non-Woven Sanding Belt

20,000 RPM 0.5 hp (0.38 kW)

- Grind, debur, strap polish, blend
- Choice of geared or gearless
- Ergonomic housing reduces cold air transmission to operator



Model	Exhaust	Free Speed	Abrasive Capacity Grinder	Type Housing	Weight	Length	Air Inlet Size
		r/min			Lb	in	in
12L2384-B1	Front	20000	5/8" or 3/4" W x 18" L Sanding Belt	Composite	2.43	15	1/4

All tools performance rated @ 90 psi / 620 kPa air pressure.

Minimum Hose I.D.: 1/4 in / 4.8 mm

Standard Equipment: No.80 and No.120 grit sanding belt or one medium grit non-woven belt, applicable wrenches, grease gun, gear lube

Sanders & Polishers

12-10 Series - Buffer - 200 Series Collet

3,200 - 5,000 RPM 0.3 hp (0.22 kW)

- Ergonomic composite housing
- Parts interchangeable with numerous other Dotco products
- Lightweight and compact design with powerful geared motor



Model	Top Seller	Collet Size	Exhaust	Free Speed	Abrasive Capacity Grinder	Type Housing	Spindle Size	Weight	Length	Air Inlet Size
				r/min				Lb	in	in
12L1092-01		1/4 in	Rear	3200	3" (75 mm) Wire Brush 3" (75mm) Buffing Wheel	Composite	5/8" - 11 e	1.54	7.2	1/4
12L1093-01		1/4 in	Rear	5000	3" (75 mm) Wire Brush 3" (75mm) Buffing Wheel	Composite	5/8" - 11 e	1.54	7.2	1/4

All tools performance rated @ 90 psi / 620 kPa air pressure.
 Minimum Hose I.D.: 1/4 in / 6.4 mm
 Standard Equipment: Applicable collet, collet wrenches

12-42 Series - External Threaded Spindle

3,400 RPM 1.7 hp (1.27 kW)

- High output motor for the most demanding applications
- Comfortable and ergonomic composite handle
- Includes auxiliary handle for optimum operator control
- Tool not supplied with backing pad as shown



Model	Exhaust	Termination	Free Speed	Abrasive Capacity Grinder	Type Housing	Weight	Length	Head Height	Air Inlet Size
			r/min			Lb	in	in	in
12L4203-80	Side	5/8" - 11 e	3400	4" (100mm) Wire Brush, 8" (200mm) Buffing Wheel	Composite	6.4	13.6	3.90	1/2
12L4206-80	Side	5/8" - 11 e	6000	9"(225mm) Sanding Disc	Composite	6.4	13.6	3.90	1/2
12L4207-80	Side	5/8" - 11 e	7200	7" (175mm)Sanding Disc	Composite	6.4	13.6	3.90	1/2

All tools performance rated @ 90 psi / 620 kPa air pressure.
 Minimum Hose I.D.: 1/2 in / 12.7 mm
 Standard Equipment: Nut, washer, spacer and wrenches

Sanding Belts - Non-Woven

Used on Cleco Dotco Belt Sanders

- Minimum order - 10 of any one belt



Model	Abrasive Capacity Grinder 1	Grit Size
14-1728	1/4" x 18"	Extra Fine
14-1729	1/4" x 18"	Fine
14-1730	1/4" x 18"	Medium
14-1731	1/4" x 18"	Coarse
14-2327	3/4" x 18"	Medium

Minimum order: 10 of any one belt



Sanding Belts - Aluminum Oxide, Resin Bond

Used on Cleco Dotco Belt Sanders

- Minimum order - 10 of any one belt



Model	Abrasive Capacity Grinder 1	Grit Size
14-1344	1/2" x 12"	40
14-1345	1/2" x 12"	50
14-1346	1/2" x 12"	60
14-1348	1/2" x 12"	80
14-1350	1/2" x 12"	100
14-1352	1/2" x 12"	120
14-1355	1/2" x 12"	150
14-1358	1/2" x 12"	180
14-1360	1/2" x 12"	240
14-1362	1/2" x 12"	320
14-1582	1" x 12"	60
14-1583	1" x 12"	80
14-1585	1" x 12"	120
14-1588	1" x 12"	180
14-1590	1/4" x 12"	60
14-1591	1/4" x 12"	80
14-1593	1/4" x 12"	120
14-1596	1/4" x 12"	180
14-1642	1" x 24"	60
14-1648	1" x 24"	180

Belt Sander Attachments

Used on Cleco Dotco Belt Sanders - 12LF, 12-12 and 12-13 Series



Model	Description	Sanding Area	Abrasive Capacity Grinder 1	Tool Series	Termination
		in			
14-1301	Coated Abrasive Attachments	1/2" x 4"	1/2" x 12" Sanding Belt	12-12, 12-13	
14-1316	Coated Abrasive Attachments	1/2" x 4"	1/2" x 12" Sanding Belt	12-12, 12-13	300 in
14-1318	Coated Abrasive Attachments	1/2" x 10"	1/2" x 24" Sanding Belt	12-12, 12-13	
14-1319	Coated Abrasive Attachments	1/2" x 10"	1/2" x 24" Sanding Belt	12-12, 12-13	300 in
14-1463	Coated Abrasive Attachments	1" x 4"	1" x 12" Sanding Belt	12-12, 12-13	1/4 in-28i
14-1473	Coated Abrasive Attachments	1" x 4"	1" x 12" Sanding Belt	12-12, 12-13	300 in
14-1603	Coated Abrasive Attachments	1" x 10"	1" x 24" Sanding Belt	12-12, 12-13	1/4 in-28i
14-1613	Coated Abrasive Attachments	1" x 10"	1" x 24" Sanding Belt	12-12, 12-13	300 in
14-1638	Coated Abrasive Attachments	1/4" x 4"	1/4" x 12" Sanding Belt	12-12, 12-13	1/4 in-28i
14-1639	Coated Abrasive Attachments	1/4" x 4"	1/4" x 12" Sanding Belt	12-12, 12-13	300 in
14-1715	Non-Woven Attachments	1/2" x 6"	1/2" x 18" Sanding Belt	12-12	300 in

Spiralcool Backing Pads

For Cleco Dotco sanders with 5/8"-11 threaded spindles. Pad contour develops draft action to cool disc and avoid excessive pick-up.

- For Cleco Dotco sanders with 5/8"-11 threaded spindles.
- Pad contour develops draft action to cool disc and avoid excessive pick-up.



Model	Description	Speed	Diameter
		r/min	in
14-2115	Flexibility - Flexible	10000	5
14-2116	Flexibility - Medium	10000	5
14-2117	Flexibility - Rigid	10000	5
14-2197	Flexibility - Flexible	12000	4
14-2198	Flexibility - Medium	12000	4
14-2199	Flexibility - Rigid	12000	4
14-2200	Flexibility - Medium	7000	7
14-2201	Flexibility - Rigid	7000	7
14-2202	Flexibility - Flexible	6000	9
14-2203	Flexibility - Medium	6000	9
14-2255	Flexibility - Flexible	11000	4.5
14-2256	Flexibility - Medium	11000	4.5
14-2257	Flexibility - Rigid	11000	4.5
14-2529	Flexibility - Flexible	7000	7

Save-A-Disc Pads

For Cleco Dotco sanders with 5/8"-11 threaded spindles. Ribs on the backing plate cause a flexing action which throws off accumulation.

- For Cleco Dotco sanders with 5/8"-11 threaded spindles.
- Ribs on the backing plate cause a flexing action which throws off accumulation.



Model	Description	Speed	Diameter
		r/min	in
14-2515	Pad Assembly	7500	5
14-2517	Pad Assembly	7500	7
14-2519	Pad Assembly	7500	9
14-2521	Pad Only	7500	9
14-2522	Plate Only	7500	5
14-2523	Plate Only	7500	7
14-2525	Nut Only	7500	9

PSA Disc Holders

adaptor Kit for 7" and 9" Depressed Center Wheels

- For Collet Chuck - Chuck the PSA disc holder shank directly into the appropriate collet (1/8" or 1/4")
- For Threaded Spindle - Remove the threaded shank from the PSA disc holder.
- Referring to the spindle adapter chart, select the correct spindle and thread it into the PSA holder.



Model	Shank Diameter Capacity	Diameter	Spindle Size
		in	
14-1105	1/4 in	1/2	5-40 Female
14-1107	1/4 in	3/4	5-40 Female
14-1110	1/4 in	1	5-40 Female
14-1111	1/4 in	1-1/2	1/4"-20 Female
14-1112	1/4 in	2	1/4"-20 Female
14-1113	1/4 in	3	1/4"-20 Female
14-1114	1/4 in	4	1/4"-20 Female
14-1146	1/8 in	1/2	5-40 Female
14-1147	1/8 in	3/4	5-40 Female
14-1170	1/8 in	1	5-40 Female

Sanding Pad Nut

For use with Cleco Dotco sanders with 5/8"-11 threaded spindles

- For use with Cleco Dotco sanders with 5/8"-11 threaded spindles



Model	Spindle Size
14-2118	5/8"-11 Threaded Spindle

Spanner Wrench

Used with 14-2118 Sanding Pad Nut

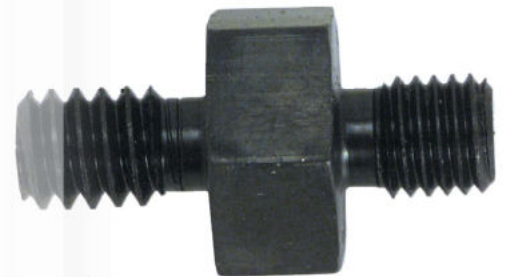


Model	Spindle Size
14-2319	5/8"-11 Threaded Spindle

Spindle Adapters

For use with PSA Disc holders

- For use with PSA Disc holders



Model	Description	Thread for Tool Spindle / PSA Disc Holder	Max Disc Diameter
			in
14-1142	Tool Spindle Thread / PSA Disc Holder Thread	1/4"-28 Male / 5-40 Male	1
14-1144	Tool Spindle Thread / PSA Disc Holder Thread	1/4"-28 Male / 1/4"-20 Male	4
14-1211	Tool Spindle Thread / PSA Disc Holder Thread	5/8"-11 Female / 3/8"-24 Male	4
14-1212	Tool Spindle Thread / PSA Disc Holder Thread	5/8"-11 Male / 1/4"-20 Male	4
14-2903	Tool Spindle Thread / PSA Disc Holder Thread	5/8"-11 Male / 5/16"-24 Male	4

12-12 Series - Right Angle Routers

20,000 - 30,000 RPM 0.3 hp (0.22 kW)

- Available in both geared and gearless
- Multiple speed and power options available to find the right tool for the application



Model	Exhaust	Shank Diameter Capacity	Free Speed	Drive	Weight	Length	Air Inlet Size
		in	r/min		Lb	in	in
12L1201-36RT	Front	1/4 in	20000	Geared 0.3 hp (0.22 kw)	1.76	6.5	1/4
12L1281-36RT	Rear	1/4 in	20000	Geared 0.3 hp (0.22 kw)	1.76	6.5	1/4
12L1300-36RT	Front	1/4 in	30000	Gearless 0.3 hp (0.22 kw)	1.54	7.4	1/4
12L1380-36RT	Rear	1/4 in	30000	Gearless 0.3 hp (0.22 kw)	1.54	7.4	1/4
12L1381-36RT	Rear	1/4 in	25000	Gearless 0.3 hp (0.22 kw)	1.54	7.4	1/4

All tools performance rated @ 90psi / 620 kPa air pressure

Minimum hose I.D.: 1/4in | 6.4 mm

Standard Equipment: Collet, applicable wrenches

10-10 & 12-10 Series - Inline Router

30,000 - 34,000 RPM 0.3 hp (0.22 kW)

- Tremendous power for the toughest portable routing operations
- Unique governor design assures minimum air consumption, maximum power all at correct speed and long motor life
- All models oil free



Model	Exhaust	Shank Diameter Capacity		Free Speed	Type Housing	Weight	Length	Air Inlet Size
		in	r/min					
10L1000-36RT	Front	1/4 in	30000	Aluminum	1.32	6.7	1/4	
12L1000-36RT	Front	1/4 in	30000	Composite	1.32	6.7	1/4	
12L1001-36RT	Front	1/4 in	34000	Composite	1.32	6.7	1/4	

All tools performance rated @ 90psi / 620 kPa air pressure.
 Minimum Hose I.D.: 1/4in / 6.4mm
 Standard Equipment: Collet, applicable wrenches

10-20 & 12-20 Series - Inline Router

20,000 - 25,000 RPM 0.6 hp (0.45 kW)

- Tremendous power for the toughest portable routing operations
- Unique governor design assures minimum air consumption, maximum power at correct speed and long motor life



Model	Top Seller	Exhaust	Shank Diameter Capacity		Free Speed	Type Housing	Weight	Length	Air Inlet Size
			in	r/min					
12L2001-01RT		Front	1/4 in	20000	Composite	1.98	7.5	1/4	
10L2000-01RT		Front	1/4 in	25000	Aluminum	1.76	0.63	1/4	
12L2000-01RT		Front	1/4 in	25000	Composite	1.98	7.5	1/4	
12L2080-01RT		Rear	1/4 in	25000	Composite	1.98	7.5	1/4	
12L2081-01RT		Rear	1/4 in	20000	Composite	1.98	7.5	1/4	

All tools performance rated @ 90psi / 620 kPa air pressure.
 Minimum Hose I.D.: 5/16in / 7.9mm
 Standard Equipment: Collet, applicable wrenches

10-25 & 12-25 Series - Inline Router

18,000 - 23,000 RPM 0.9 hp (0.67 kW)

- Sustained power for any routing application
- Composite comfortable grip
- Roll value for easy operation



Model	Top Seller	Exhaust	Shank Diameter Capacity	Free Speed	Type Housing	Weight	Length	Air Inlet Size
			in	r/min		Lb	in	in
12L2502-01RT		Front	1/4 in	18000	Composite	2.65	7.1	1/4
12L2582-0124RT		Rear	3/8 in	18000	Composite	2.65	7.1	1/4
10L2500-01RT		Front	1/4 in	23000	Aluminum	2.43	6.9	1/4
10L2580-01RT		Rear	1/4 in	23000	Aluminum	2.43	6.9	1/4
12L2500-01RT		Front	1/4 in	23000	Composite	2.65	7.1	1/4
12L2580-0124RT		Rear	3/8 in	23000	Composite	2.65	7.1	1/4
12L2580-01RT		Rear	1/4 in	23000	Composite	2.65	7.1	1/4
12L2582-01RT		Rear	1/4 in	18000	Composite	2.65	7.1	1/4

All tools performance rated @ 90psi / 620 kPa air pressure.
 Minimum Hose I.D.: 5/16in / 7.9mm
 Standard Equipment: Collet, applicable wrenches

10-40 & 12-40 Series - Inline Router

18,000 RPM 1.7 hp (1.27 kW)

- Maximum power for larger routing application
- Tremendous power for the toughest portable routing operations
- Unique governor design assures minimum air consumption, maximum power at correct speed and long motor life
- All models oil free



Model	Top Seller	Exhaust	Shank Diameter Capacity	Free Speed	Type Housing	Weight	Length	Air Inlet Size
			in	r/min		Lb	in	in
12L4018-01		Front	1/4 in	18000	Composite	4.19	11.3	1/2
12L4018-03		Front	3/8 in	18000	Composite	4.19	11.3	1/2

All tools performance rated @ 90psi / 620 kPa air pressure.
 Minimum Hose I.D.: 1/2in / 12.7mm
 Standard Equipment: Collet, applicable wrenches

10-43 Series - Base Mount Router

9,000 - 18,000 RPM 1.7 hp (1.27 kW)

- Roll valve gives easy, convenient operation
- Cool running pneumatic motor - Stays cool even under heavy load
- Easy-to-use thumb throttle can be operated without releasing hand from handle
- Smooth accurate cuts - assured by precision spindle



Model	Top Seller	Exhaust	Shank Diameter Capacity		Free Speed	Type Housing	Weight	Length	Air Inlet Size
			in	r/min					
10T4316-62		Side	1/2 in	16000	Aluminum	7.5	7.1	1/2	
10T4309-62		Side	1/2 in	9000	Aluminum	7.5	7.1	1/2	
10T4318-62		Side	1/2 in	18000	Aluminum	7.5	7.1	1/2	

All tools performance rated @ 90psi / 620 kPa air pressure.
 Minimum Hose I.D.: 1/2in / 12.7mm
 Standard Equipment: Collet, applicable wrenches

11-43 Series - Mountable Power Unit

18,000 RPM 1.7 hp (1.27 kW)

- Cool running pneumatic motor stays cool even under heavy load
- Flat top provides firm setting for changing cutters and making adjustments
- Smooth accurate cuts - assured by precision spindle



Model	Exhaust	Shank Diameter Capacity		Free Speed	Type Housing	Weight	Length	Air Inlet Size
		in	r/min					
11T4316-62	Side	1/2 in	16000	Aluminum	5.5	7.1	1/2	
11T4309-62	Side	1/2 in	9000	Aluminum	5.5	7.1	1/2	
11T4318-62	Side	1/2 in	18000	Aluminum	5.5	7.1	1/2	

All tools performance rated @ 90psi / 620 kPa air pressure.
 Minimum Hose I.D.: 1/2in / 12.7mm
 Standard Equipment: Collet, applicable wrenches

Router Assemblies

For use with Dotco 12-10, 12-20 and 12-25 series

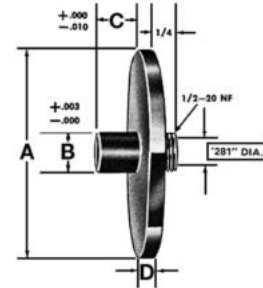
- For use with Dotco 12-10, 12-20 and 12-25 series



Model	Description	Shank Diameter Capacity	Tool Series
14-1180	Router Housing	1/4 in	12-10
14-2080	Router Housing	3/8 in	12-20, 12-25
14-2082	Lock Nut	3/8 in	12-20, 12-25
14-2176	Nose Housing	1/4 in	12-20, 12-25
14-2180	Complete Attachment	1/4 in	12-20, 12-25
14-2187	Complete Attachment	1/4 in	12-10
14-2426	Nose Housing	3/8 in	12-20, 12-25
14-2429	Complete Attachment	3/8 in	12-20, 12-25

Router Guides For Router Bits with 3/8" Shanks

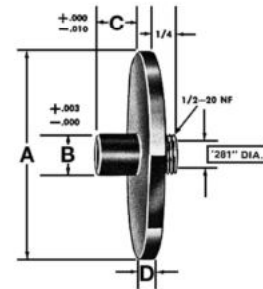
- For use on Dotco 12-10, 12-20, 12-20, 12-25 and 12-40 series.
- The minimum router bit length (OAL) to be used is determined by the formula: OAL = 1-13/16"+C+P (series 12-10); OAL = 2"+C+P (series 12-20 & 12-25). "C" is the "C" dimension of the router guide and "P" is the desired protrusion of the router bit.
- Important: Insert bit into collet as far as possible, then pull out 1/16" and tighten collet.
- In an emergency, if it is necessary to pull out the bit more than 1/4", be sure to insert a short length of blank shank (not to exceed 5/8" long) in the bottom of the collet before inserting the bit.
- May be subject to Minimum Order Quantities



Model	Description	Dimension A	Dimension B	Dimension C	Dimension D
		in	in	in	in
14-2240	A-2-1/2 B-3/8 C-3/8 D-1/8	2-1/2	3/8	3/8	1/8
14-2243	A-2-1/2 B-5/8 C-3/8 D-1/8	2-1/2	5/8	3/8	1/8
14-2531	A-1-1/2 B-1/2 C-3/8 D-1/8	1-1/2	1/2	3/8	1/8
14-2538	A-1-1/2 B-1/2 C-1/2 D-1/8	1-1/2	1/2	1/2	1/8
14-2539	A-1-1/2 B-1/2 C-5/8 D-1/8	1-1/2	1/2	5/8	1/8
14-2540	A-1-1/2 B-9/16 C-3/8 D-1/8	1-1/2	9/16	3/8	1/8
14-2541	A-1-1/2 B-9/16 C-1/2 D-1/8	1-1/2	9/16	1/2	1/8
14-2542	A-1-1/2 B-9/16 C-5/8 D-1/8	1-1/2	9/16	5/8	1/8
14-2544	A-1-1/2 B-5/8 C-5/8 D-1/8	1-1/2	5/8	5/8	1/8
14-2630	A-2-1/2 B-9/16 C-1/2 D-1/8	2-1/2	9/16	1/2	1/8
14-2631	A-2-1/2 B-5/8 C-5/8 D-1/8	2-1/2	5/8	5/8	1/8
14-2632	A-2-1/2 B-1/2 C-1/2 D-1/8	2-1/2	1/2	1/2	1/8
14-2633	A-2-1/2 B-1/2 C-5/8 D-1/8	2-1/2	1/2	5/8	1/8
14-2634	A-2-1/2 B-9/16 C-3/8 D-1/8	2-1/2	9/16	3/8	1/8
14-2635	A-2-1/2 B-9/16 C-5/8 D-1/8	2-1/2	9/16	5/8	1/8
14-2636	A-2-1/2 B-5/8 C-1/2 D-1/8	2-1/2	5/8	1/2	1/8
14-2893	A-1-1/2 B-5/8 C-3/8 D-1/8	1-1/2	5/8	3/8	1/8
14-2925	A-1-1/2 B-5/8 C-1/2 D-1/8	1-1/2	5/8	1/2	1/8

Router Guides For Router Bits with 1/4" Shan

- For use on Dotco 12-10, 12-20, 12-20, 12-25 and 12-40 series.
- The minimum router bit length (OAL) to be used is determined by the formula: OAL = 1-13/16"+C+P (series 12-10); OAL = 2"+C+P (series 12-20 & 12-25). "C" is the "C" dimension of the router guide and "P" is the desired protrusion of the router bit.
- Important: Insert bit into collet as far as possible, then pull out 1/16" and tighten collet.
- In an emergency, if it is necessary to pull out the bit more than 1/4", be sure to insert a short length of blank shank (not to exceed 5/8" long) in the bottom of the collet before inserting the bit.
- May be subject to minimum order quantities



Model	Description	Dimension A	Dimension B	Dimension C	Dimension D
		in	in	in	in
14-2400	A-1 B-3/8 C-1/8 D-1/8	1	3/8	1/8	1/8
14-2401	A-1 B-3/8 C-1/4 D-1/8	1	3/8	1/4	1/8
14-2402	For Router Bits with 1/4" Shanks	1	3/8	3/8	1/8
14-2406	A-1 B-7/16 C-1/8 D-1/8	1	7/16	1/8	1/8
14-2407	A-1 B-7/16 C-1/4 D-1/8	1	7/16	1/4	1/8
14-2408	For Router Bits with 1/4" Shanks	1	7/16	3/8	1/8
14-2411	A-1 B-1/2 C-1/4 D-1/8	1	1/2	1/4	1/8
14-2412	For Router Bits with 1/4" Shanks	1	1/2	1/2	1/8
14-2413	A-1 B-1/2 C-5/8 D-1/8	1	1/2	5/8	1/8
14-2414	A-1 B-1/2 C-3/4 D-1/8	1	1/2	3/4	1/8
14-2417	For Router Bits with 1/4" Shanks	1	9/16	1/8	1/8
14-2420	A-1 B-5/8 C-1/8 D-1/8	1	5/8	1/8	1/8
14-2421	A-1 B-5/8 C-5/8 D-1/8	1	5/8	5/8	1/8
14-2500	A-1-1/2 B-3/8 C-1/8 D-1/8	1-1/2	3/8	1/8	1/8
14-2501	For Router Bits with 1/4" Shanks	1-1/2	3/8	1/4	1/8
14-2502	A-1-1/2 B-3/8 C-3/8 D-1/8	1-1/2	3/8	3/8	1/8
14-2505	A-1-1/2 B-7/16 C-1/8 D-1/8	1-1/2	7/16	1/8	1/8
14-2506	A-1-1/2 B-7/16 C-1/4 D-1/8	1-1/2	7/16	1/4	1/8
14-2507	A-1-1/2 B-7/16 C-3/8 D-1/8	1-1/2	7/16	3/8	1/8
14-2510	A-1-1/2 B-1/2 C-1/4 D-1/8	1-1/2	1/2	1/4	1/8
14-2511	A-1-1/2 B-1/2 C-3/8 D-1/8	1-1/2	1/2	3/8	1/8
14-2512	A-1-1/2 B-1/2 C-1/2 D-1/8	1-1/2	1/2	1/2	1/8
14-2600	A-2-1/2 B-1/2 C-1/2 D-3/16	2-1/2	1/2	1/2	3/16
14-2703	A-3/4 B-3/8 C-1/2 D-1/8	3/4	3/8	1/2	1/8

10-43 Series Router Template Guides



Model	Description	For use with router bits up to:	Dimension A	Dimension B	Dimension C
			in	in	in
14-4019	Router Accessories	1/4	5/16	3/8	3/16
14-4020	Router Accessories	5/16	3/8	7/16	5/16
14-4021	Router Accessories	1/2	9/16	5/8	3/16

Rivet Trimmer Attachment

For use on Dotco 12-12 series front or rear exhaust collet models.

- For use on Cleco Dotco 12-12 series front or rear exhaust collet models.
- Trims “pop” or “blind” rivets up to 3/16” diameter, also suitable for shaving small welds.
- Micrometer adjustment controls height of cut to .001”.
- Runner pads minimize scratching of the work surface.



Model	Description	Shank Diameter Capacity	Recommended Use	Diameter		Length	
				in	mm	in	mm
14-1332	Cutters - Cylindrical, carbide	1/4 in	Shaving welds	1/2	1.88	48	
14-1723	Trimmer						
14-1732	Cutters - Inverted Cone, carbide	1/4 in	Steel Rivets	3/4	1.88	48	

Two Handed Router Base

Easy depth adjustment. Can also be used with 10-43 template guides.

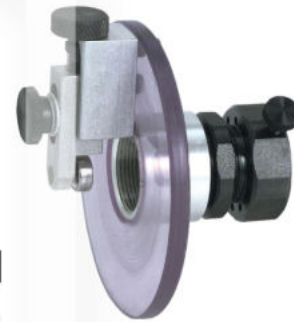


- Two handed control for router applications.
- Easy depth adjustment. Can also be used with 10-43 template guides.
- Cutters: 14-2442 (combination flush/bevel 22°)

Model	Description	Tool Series
14-1577	Use with front or rear exhaust collet models	12-10
14-2577	Use with front or rear exhaust collet models	12-20, 12-25

Laminate Trimmer Attachment

Used on Cleco Dotco 12-10, 12-10 and 12-25 Series Routers



Model	Description	Tool Series
14-1178	Router Accessories	12-10
14-2178	Router Accessories	12-20, 12-25

12-22 Series - Right Angle - Oscillating Saw

14,000 RPM 0.6 hp (0.45 kW)

- Available in right angle or inline
- Excellent control and high productivity with minimum fatigue
- Easy to change blades
- Adjustable depth control



Model	Top Seller	Saw Blade Capacity		Free Speed r/min	Configuration	Type Housing	Maximum Depth of Cut		Weight Lb	Length in	Air Inlet Size in	Exhaust
		in	mm				in	mm				
12L2065-90		2.50	63.5	14000	Gerade	Composite	0.56	14.3	2.2	8.9	1/4	Rear
12L2240-90		2.50	63.5	14000	Rechtwinklig	Composite	0.56	14.3	2.2	10.9	1/4	Rear

All tools performance rated @ 90psi / 620 kPa air pressure.
 Minimum Hose I.D.: 5/16in / 7.9mm
 Standard Equipment: Applicable wrenches, oilless blades

12-12 and 12LF Series - Saw

2,400 - 20,000 RPM 0.3 hp (0.22 kW) 0.4hp (.3kW) 12LF

- Vacuum ready
- Compact and easy to use
- Easy to change blades
- Adjustable depth control



Model	Saw Blade Capacity		Free Speed r/min	Type Housing	Maximum Depth of Cut		Weight Lb	Length in	Air Inlet Size in	Exhaust
	in	mm			in	mm				
12S1206-02	2.01	51	12000	Composite	0.43	11	1.32	7.1	1/4	Front
12S1273-03	2.01	51	12000	Composite	0.43	11	2.2	7.1	1/4	Vacuum Ready
12S1282-02	2.01	51	12000	Composite	0.43	11	1.32	7.1	1/4	Rear
12LF283-02	2.01	51	20000	Composite	0.43	11	1.32	7.1	1/4	Rear
12S1207-02	2.01	51	20000	Composite	0.43	11	1.32	7.1	1/4	Front
12S1274-03	2.01	51	20000	Composite	0.43	11	2.2	7.1	1/4	Vacuum Ready
12S1283-02	2.01	51	20000	Composite	0.43	11	1.32	7.1	1/4	Rear
12S1288-02	2.01	51	2400	Composite	0.43	11	1.54	8.9	1/4	Rear
12S1289-02	2.01	51	3600	Composite	0.43	11	1.54	8.9	1/4	Rear

All tools performance rated @ 90psi / 620 kPa air pressure.
 Minimum Hose I.D.: 1/4in / 6.4mm
 Standard Equipment: Applicable wrenches, oilless blades

12-27 Series - Saw

430 - 11,000 RPM 0.9 hp (0.67 kW)

- Compact and easy to use
- Excellent control and high productivity with minimum fatigue
- Easy to change blades



Model	Saw Blade Capacity		Free Speed r/min	Type Housing	Maximum Depth of Cut		Weight Lb	Length in	Air Inlet Size in	Exhaust
	in	mm			in	mm				
12S2749-01	3.39	86	11000	Composite	1.00	25.4	4.9	11.4	1/4	Front
12S2793-02	4.02	102	3200	Composite	1.00	25.4	5.3	14.5	1/4	Rear
12S2790-02	4.02	102	430	Composite	1.00	25.4	6.2	16.2	1/4	Rear
12S2774-02	3.39	86	7000	Composite	1.00	25.4	6.4	14.1	1/4	Vacuum Ready
12S2775-00	4.02	102	8500	Composite	1.00	25.4	7.3	14.1	1/4	Vacuum Ready
12S2775-01	4.02	102	8500	Composite	1.00	25.4	7.3	14.1	1/4	
12S2748-01	4.02	102	9000	Composite	1.00	25.4	4.9	11.4	1/4	Front
12S2792-02	3.39	86	940	Composite	1.00	25.4	6.2	16.2	1/4	Rear
12S2794-01	2.52	64	4700	Composite	0.56	14.3	4.63	13.2	1/4	Rear

All tools performance rated @ 90psi / 620 kPa air pressure.
Minimum Hose I.D.: 5/16in / 7.9mm
Standard Equipment: Applicable wrenches, oilless blades, 3/4in Arbor adapter

12-42 Series - Saw

5,800 - 8,600 RPM 1.7 hp (1.27 kW)

- Adjustable depth control
- Easy to change blades
- Compact and easy to use



Model	Saw Blade Capacity		Free Speed r/min	Type Housing	Maximum Depth of Cut		Weight Lb	Length in	Air Inlet Size in	Exhaust
	in	mm			in	mm				
12S4216-01	4.02	102	5800	Composite	1.00	25.4	7.9	15.5	1/4	Front
12S4218-01	4.02	102	8600	Composite	1.00	25.4	7.9	15.5	1/4	Front
12S4225-03	4.02	102	8500	Composite	1.00	25.4	9.3	17	1/4	Vacuum Ready

All tools performance rated @ 90psi / 620 kPa air pressure.
Minimum Hose I.D.: 1/2in / 12.7mm
Standard Equipment: Applicable wrenches, oilless blades, 3/4in Arbor adapter

Saw Blades - 1/4" arbor hole

Used on Cleco Dotco Saws

- Used for sawing non-metallic materials



Model	Description	Maximum Depth of Cut	Speed	Diameter	Recommended Use (Guidelines Only)
		in	r/min	in	
14-0930	High Speed Steel 44 Teeth	3/32" x 1/16"	12000	1-1/4	1.25" OD 44T for Fiberglass, Rubber
14-1395*	Carbide Chip 36/80 Grit	7/16" x 3/32"	20000	2	Discontinued
14-1396*	Carbide Chip 36/80 Grit	7/32" x 3/32"	20000	1-1/2	Discontinued
14-1398*	Diamond Chip 40/60 Grit	7/32" x 5/64"	20000	1-1/2	1.5" OD Diamond 60-80 Grit for Aluminum, Laminated Plastics, Pressed Board, Wood
14-1400*	Diamond Chip 40/60 Grit	7/16" x 5/64"	20000	2	2" OD Diamond 40-60 Grit for Fiberglass, Rubber
14-1875	High Speed Steel 22 Teeth	3/32" x 1/16"	12000	1-1/4	1.25" OD 22T for Aluminum, Laminated Plastics, Pressed Board, Wood
14-1890	High Speed Steel 22 Teeth	7/16" x 1/16"	12000	2	2" OD 22T for Aluminum, Laminated Plastics, Pressed Board, Wood
14-1891	High Speed Steel 44 Teeth	7/16" x 1/16"	12000	2	2" OD 44T for Aluminum, Laminated Plastics, Pressed Board, Wood
14-1892	High Speed Steel 60 Teeth	7/16" x 1/16"	12000	2	2" OD 60T for Aluminum, Laminated Plastics, Pressed Board, Wood
14-1895	High Speed Steel 22 Teeth	7/32" x 1/16"	12000	1-1/2	1.5" OD 22T Aluminum, Laminated Plastics, Pressed Board, Wood

Note; * CAUTION: Use only for sawing non-metallic materials

Saw Blades - 7/16" arbor hole

Used on Cleco Dotco Saws

- Used on Cleco Dotco Saws



Model	Description	Maximum Depth of Cut	Tool Series	Diameter	Recommended Use (Guidelines Only)
		in		in	
14-1887	High Speed Steel 22 Teeth	7/16" X 1/16"	12S1288-04	2	Discontinued
14-1888	High Speed Steel 44 Teeth	7/16" X 1/16"	12S1288-04	2	2" OD 44T for Aluminum, Laminated Plastics, Pressed Board, Wood.
14-1889	High Speed Steel 60 Teeth	7/16" X 1/16"	12S1288-04	2	2" OD 60T for Aluminum, Laminated Plastics, Pressed Board, Wood
14-2146	High Speed Steel 80 Teeth	9/16	12S2793-01	2-1/2	2 1/2" OD 80T for 16 Gauge Steel
14-2147	High Speed Steel 44 Teeth	9/16	12S2794-01	2-1/2	2 1/2"OD 44T for 1/4" Aluminum, 1/2" Plywood, 1/2" Phenolic
14-2928	High Speed Steel 60 Teeth	15/16"	12S2794-02	3-3/8	3 1/2" OD 60T for 1/4" Aluminum, 1/2" Plywood, 1/2" Phenolic
14-2929	High Speed Steel 80 Teeth	15/16"	12S2792-02	3-3/8	Discontinued

Saw Blades - 3/4" arbor hole

Used on Cleco Dotco Saws

- Used for sawing non-metallic materials



Model	Description	Maximum Depth of Cut	Diameter	Recommended Use
		in	in	(Guidelines Only)
14-2690	Diamond Chip 60/80 Grit	1" x 5/64"	4	4"OD Diamond 60-80 Grit for Fiberglass, Composite, Carbon Fiber
14-2694*	Carbide Chip 36 Grit	1" x 11/64"	4	Discontinued
14-2697*	Carbide Chip 80 Grit	1" x 1/8"	4	Discontinued
14-2699*	Carbide Tip 20 Teeth	1" x 7/64"	4	Discontinued
14-2700*	Carbide Tip 20 Teeth	1" x 7/64"	4	4"OD Carbide Tip 20T for Thicker Fiberglass, Plastic Laminates to 1/2" thick
14-2701*	Carbide Chip 36/80 Grit	1" x 1/8"	4	4" OD Carbide Chip for Fiberglass, Hard Rubber
14-2710	Carbide Tip 20 Teeth	1" x 7/64"	4	4"OD Carbide Tip 20T special for Thin non-ferrous material (to approx . 1/8" thick)
14-2711	Carbide Tip 12 Teeth	1" x 7/64"	4	4"OD Carbide Tip 12T Special for Thicker non-ferrous material (to approx . 1/2" thick)

Note; * CAUTION: These carbide chip and tip and diamond blades are not to be used on metallic materials.

**Slim blade for easy cutting of fiberglass, with minimum dust -36 grit on periphery and 80 grit on the sides.

Saw Blades - oscillating saws with 3/8" arbor hole

Used on Cleco Dotco Oscillating Saw

- Used on 12-22 Series Oscillating saws



Model	Description	Maximum Depth of Cut	Diameter	Recommended Use
		in	in	(Guidelines Only)
14-1740*	Carbide Chip 36/80 Grit	7/16" x 3/32"	2	2" OD Carbide Chip 36/80 Grit for Fiberglass
14-1741*	Diamond Chip 40/60 Grit	7/16" x 5/64"	2	2"OD Diamond 40/60 Grit for Fiberglass, Carbon Composites
14-1742	Stainless Steel 124 Teeth	9/16" x 3/64"	2-1/2	2.5" OD 124T for Wood, Uncured or Cured Composites, Aluminum, Plastic
14-1743	Carbide 120 Teeth	9/16" x 1/16"	2-1/2	2.5" OD Carbide 120T for Cured Graphic Composites
14-1744	Razor	9/16" x 3/64"	2-1/2	Discontinued
14-1745	Stainless Steel 120 Teeth	9/16" x 3/64"	2-1/2	2.5" OD „Sectioned“ for Confined Space
14-1746	Flush Stainless 124 Teeth	9/16" x 3/64"	2-1/2	2.5" OD 120T Flush Cutting for Wood, Uncured or Cured Composites, Aluminum, Plastic
14-1747	Razor	9/16" x 3/64"	3	Discontinued

Use only for sawing non-metallic materials. Note:

Vacuum Conversion Kits 12-27 series

Converts front exhaust to a one of the configurations shown below

- Refer to the Vacuum Ready 12-27 Models in the catalog



Model	Description	Tool Series
2704	Option 1 - Porta Bag	12-27
2705	Option 2 - Floor Bag	12-27
2729	Option 3 - Vacuum System Adapter	12-27

To convert an existing Cleco Dotco front exhaust series 12-27 saw to Vacuum operation, order any of the conversion kits listed in the table. NOTE: When converting to vacuum, free speed of the tool will be reduced 20%.

Vacuum Conversion Kits 12-42 series

Converts front exhaust to a one of the configurations shown below

- Refer to the Vacuum Ready 12-42 Models in the catalog



Model	Description	Tool Series
4131	Option 1 - Porta Bag	12-42
4132	Option 2 - Floor Bag	12-42
4133	Option 3 - Vacuum System Adapter	12-42

To convert an existing Cleco Dotco front exhaust series 12-42 saw to Vacuum operation, order any of the conversion kits listed in the table. NOTE: When converting to vacuum, free speed of the tool will be reduced 20%.

SC3A Series - Triple Scaler

Piston Type

- Piston Type
- For maximum material removal
- Heavy duty, rugged application



Model	Bore	Stroke	Blows Per Minute	Air Inlet Size	Length	Weight	Air Inlet Size
	in	in		in	in	Lb	in
SC3A	0.88	0.81	5200	3/8	13.3	7.9	3/8

All tools performance rated @ 90psi / 620 kPa air pressure.
 Minimum Hose I.D.: 3/8in / 9.6mm
 Standard Equipment: Operating instructions & service manual

B1 Series - Lever Start - Needle Scaler

Built-in Chisel Retainer



- Built-in Chisel Retainer
- Front Exhaust
- Lever Start
- Needle Type

Model	Top Seller	Bore	Stroke	Abrasive Capacity	Blows Per Minute	Air Inlet Size	Length	Weight	Retainer Type	Air Inlet Size
		in	in			in	in	Lb		in
B1-CNB-LT-RD		1	1.1	5" 125 mm needles standard, 7" 180 mm needles optional	4600	1/4	15	6.4	Pin	1/4

All tools performance rated @ 90psi / 620 kPa air pressure.
 Minimum Hose I.D.: 5/16in / 7.9mm
 Standard Equipment: Operating instructions & service manual

MP5187 - Lightweight Needle Scaler

Almost half the weight of standard models with similar BPM



- 4200 Blows per minute
- Compact design for work in close quarters
- Almost half the weight of standard models with similar BPM
- Precision heat treated needles for maximum performance

Model	Top Seller	Bore	Stroke	Blows Per Minute	Air Inlet Size	Length	Weight	Air Inlet Size
		in	in		in	in	Lb	in
MP5187		0.79	0.59	4200	1/4	8.9	2.5	1/4

General: Air Inlet 1/4" NPT Use 1/4" (9.6mm) I.D. Hose All tools performance rated @ 90psi (620 kPa) air pressure.
 Standard Equipment: MP5187: 12 needles, 1/8" (3mm) dia., 5" (125mm) long. Owners Manual, Parts sheet. Optional Equipment: MP5187: 8913300: 3mm x 7" carbon steel flat tip needle kit (12). 80074300: 3mm x 7" chisel tip needles. 71010300: (12) 3mm x 5" with 3mm needle holder

B1 Series - Lever Start - Needle Scaler Kit

Kit Includes B1-CNB-LT-RD scaler, whip hose, extra set of needles, two chisels, extra chisel retainer, retainer parts and metal case.

- Kit Includes B1-CNB-LT-RD scaler, whip hose, extra set of needles, two chisels, extra chisel retainer, retainer parts and metal case.



Model	Top Seller	Bore	Stroke	Abrasive Capacity	Blows Per Minute	Length	Weight	Retainer Type
		in	in			in	Lb	
B1-CNB-LT-RD-K		0.04	1.1	5" 125 mm needles standard, 7" 180 mm needles optional	4600	15	6.4	Built-in

All tools performance rated @ 90psi / 620 kPa air pressure.
 Minimum Hose I.D.: 5/16in / 7.9mm
 Standard Equipment: Operating instructions & service manual

B1 Series - Push-Pull Start - Chisel Scaler

Built-in Chisel Retainer

- Built-in Chisel Retainer
- Chisel Type



Model	Top Seller	Bore	Chisel	Stroke	Abrasive Capacity	Blows Per Minute	Air Inlet Size	Length	Weight	Retainer Type
		in	in	in			in	in	Lb	
B1-C-PT		1	.500	1.1	1/2" 12.7 mm Square Stock	4600	1/4	12	4.41	Built-in

All tools performance rated @ 90psi / 620 kPa air pressure.
 Minimum Hose I.D.: 5/16in / 7.9mm
 Standard Equipment: Operating instructions & service manual

B Series - Lever Start - Chisel Scaler

Built-in Chisel Retainer

- Built-in Chisel Retainer
- Chisel Type



Model	Top Seller	Bore In	Chisel In	Stroke In	Abrasive Capacity	Blows Per Minute	Air Inlet Size In	Length In	Weight Lbs	Retainer Type
B1-C-LT		1	.500	1.1	1/2" 12.7 mm Square Stock	4600	1/4	10.3	4.41	Built-in
BR-C-LT		1	.625	1.1	5/8" 16 mm round stock	4200	1/4	10.4	4.41	Built-In

All tools performance rated @ 90psi / 620 kPa air pressure.
 Minimum Hose I.D.: 5/16in / 7.9mm
 Standard Equipment: Operating instructions & service manual

MP5195 - Long Reach Scaler

Long reach scaler design for quick and easy stripping of dirt, grease, paint, glue, resins, floor coverings and tiles

- 2200 Blows per minute
- For rugged scaling applications
- Long reach scaler design for quick and easy stripping of dirt, grease, paint, glue, resins, floor coverings and tiles
- Full Range of chisel blades



Model	Stroke	Blows Per Minute	Length	Piston Diameter	Piston Stroke	Weight
	in		in	in	in	Lb
MP5195	1.5	2200	60	1.1	1.5	11.5

General: Air inlet 1/4" NPT for MP5195 Model. Use 1/4" (9.6mm) I.D. hose. All tools performance rated @ 90psi (620 kPa) air pressure. Standard Equipment: 51741 4" 5/8 hex chisel. Owners Manual, Parts list. Optional Accessories: 51741 4" chisel, 5/8 hex. 51742 2" chisel, 5/8 hex. 51743 8" scraper w/replaceable blade. 51744 12" scraper w/replaceable blade. 51745 2" alum. bronze non-spark pack. 51746 8" replacement blade for 51744 12" scraper. 51749 4" non-spark chisel

CH30 Series Chipping Hammer

Heavy duty for rugged use



- Heavy duty for rugged use
- Ring valve hard hitting hammer
- Forged steel hammer
- Heat treated cylinder & piston for reduced wear
- Replaceable bushing

Model	Top Seller	Bore	Chisel	Stroke	Abrasive Capacity	Blows Per Minute	Air Inlet Size	Length	Weight	Air Inlet Size
		in	in	in			in	in	Lb	in
CH-30-HX		1.125	.580	2.5	.580 in 14.7 mm Hex	2200	3/8	17.7	15	3/8
CH-30-RD		1.125	.680	2.5	.680 in 17.3 mm Round Shank	2200	3/8	17.7	15	3/8

All tools performance rated @ 90psi / 620 kPa air pressure.
 Minimum Hose I.D.: 1/2in / 12.7mm
 Standard Equipment: Operating instructions & service manual

E & F Series - Rivet Hammer - Round Taper Nose Riveter

Up to 1/4" Rivets



- For driving 1/8"-1/4" (3-6mm) rivets
- Standard beehive retainer
- Built-in air regulator controls power output
- Spool valve for precise speed control

Model	Retainer Type	Bore	Blows Per Minute	Weight	Length	Air Inlet Size
		in		Lb	in	in
E4-2335	Open	0.50	1600	2.6	8.4	1/4
E5-2336	Open	0.50	1400	2.9	9.4	1/4
F4-PT-RT-B	Beehive spring	0.56	1700	3.31	8.7	1/4

All tools performance rated @ 90 psi / 620 kPa air pressure. Minimum Hose I.D.: 1/4 in / 6.4 mm
 Standard Equipment: Operating instructions & service manual
 E4-2335 and E5-2336 have minimum order quantities

12-20 Series - Nibbler

Great for tight access application

- Great for tight access application
- Suitable for general industry



Model	Capacity	Free Speed	Air Inlet Size	Length	Weight	Air Inlet Size
		r/min	in	in	Lb	in
12L2062-96	18 ga. Mild Steel	6	1/4	8.3	1.1	1/4

All tools performance rated @ 90psi / 620 kPa air pressure.



B1 Series Chisels (Safety Retainer Type)

For use with B1 Series Chisels



Model	Description	Stock Size		Length	
		in	in	in	mm
839050	Spoon Chisel	1/2 in	7.3	184.15	
839051	Cold Chisel	1/2 in	7.5	190.5	
839052	Hardened Blank	1/2 in	7.5	190.5	
839053	Hardened Blank	1/2 in	12	304.8	
839299	Spoon Chisel	1/2 in	12	304.8	
839334	Spoon Chisel	1/2 in	18	457.2	
839335	Cold Chisel	1/2 in	18	457.2	
839341	Cold Chisel	1/2 in	12	304.8	
839467	Cold Chisel	1/2 in	8	203.2	
839740	Spoon Chisel	1/2 in	7.3	184.15	

BR Series Chisels (Safety Retainer Type)

For use with BR Series Chisels



Model	Description	Diameter	Stock Size	Length	
		in	in	in	mm
829150	Cold	5/8	5/8 in	8.5	215.9
829165	Long Wide Blade	5/8	5/8 in	7	177.8
829173	Blank	5/8	5/8 in	7.5	190.5
829301	Scaling	5/8	5/8 in	9	228.6
829310	Spoon	5/8	5/8 in	7.5	190.5

Air Hoses



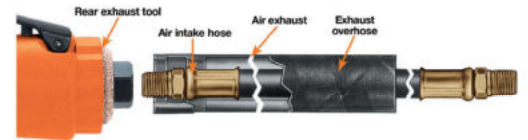
Model	Description	Fittings (NPT)	Tool Series	Diameter		Length	
				in	ft	ft	m
45-0948	Air Hose	1/4	10-04, 12-03, 12-04	1/4	5		1.524
45-1409	Air Hose	1/8 - 1/4	10-10, 10-11, 10-12	1/4	8		2.4384
45-1810	Air Hose	3/8 - 1/2		1/2	10		3.048
46-1610	Air Hose	3/8 - 3/8		3/8	10		3.048
A110026	Air Hose	1/8 - 3/8-24		3/16	6		1.8288
A139856	Air Hose	1/8 - 1/8		3/16	6		1.8288

3/16" & 1/4" hoses have braided covers, all others have neoprene covers.



Overhose

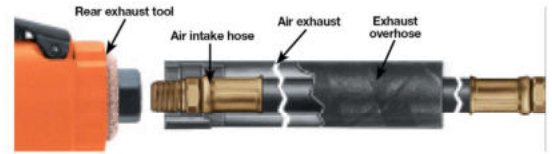
For Use with Cleco Dotco Series rear exhaust tools



Model	Description	Tool Series	Length	
			ft	m
45-0945	Overhose Only	10-04	1	0.3048
45-0955	Overhose Only	10-04	2	0.6096
45-0956	Overhose Only	10-04	4	1.2192
45-0974	Overhose Only	12-91	4	1.2192
45-1901	Overhose Only	10-10, 10-11, 10-12	4	1.2192
45-1902	Overhose Only	10-10, 10-11, 10-12	8	2.4384
45-1904	Overhose Only	10-10, 10-11, 10-12	2	0.6096
45-2629	Overhose Only	10-20, 10-21, 10-22, 10-25, 10-26, 10-27, 12-20, 12-21, 12-22, 12-25, 12-26, 12-27, 12-28, 15LS, 15LN, 12-10, 12-11, 12-12, 12-13, 15LF, 15-14	2	0.6096
45-2687	Overhose Only	10-20, 10-21, 10-22, 10-25, 10-26, 10-27, 12-20, 12-21, 12-22, 12-25, 12-26, 12-27, 12-28, 15LS, 15LN, 12-10, 12-11, 12-12, 12-13, 15LF, 15-14, 14CF, 14CS, 14CN	4	1.2192
45-2688	Overhose Only	10-20, 10-21, 10-22, 10-25, 10-26, 10-27, 12-20, 12-21, 12-22, 12-25, 12-26, 12-27, 12-28, 15LS, 15LN, 12-10, 12-11, 12-12, 12-13, 15LF, 15-14, 14CF, 14CS, 14CN	8	2.4384
45-6001	Overhose Only	12-03, 12-04	4	1.2192
45-6002	Overhose Only	12-03, 12-04	2	0.6096
45-6003	Overhose Only	12-03, 12-04	1	0.3048

Overhose Assemblies and Conversion Kits

For Use with Cleco Dotco Series rear exhaust tools



Model	Description	Tool Series	Lengths
45-0946	Includes 45-0945 Overhose and 45-0948 Airhose	10-04	1.0 ft 0.3 m Overhose 5.0 ft 1.5 m Airhose
45-0953	Includes 45-0955 Overhose and 45-0948 Airhose	10-04	2.0 ft 0.6 m Overhose 5.0 ft 1.5 m Airhose
45-0954	Includes 45-0956 Overhose and 45-0948 Airhose	10-04	4.0 ft 1.2 m Overhose 5.0 ft 1.5 m Airhose
45-1930	Includes 45-1904 Overhose and 45-1409 Airhose	10-10, 10-11, 10-12	2.0 ft 0.6 m Overhose 8.0 ft 2.4 m Airhose
45-1931	Includes 45-1901 Overhose and 45-1409 Airhose	10-10, 10-11, 10-12	4.0 ft 1.2 m Overhose 8.0 ft 2.4 m Airhose
45-1932	Includes 45-1902 Overhose and 45-1409 Airhose	10-10, 10-11, 10-12	8.0 ft 2.4 m Overhose 8.0 ft 2.4 m Airhose
45-2783	Non-Overhose to Overhose conversion kit. Includes 45-2629 Overhose and 45-1408 Airhose	12-10, 12-11, 12-12, 12-13, 15LF, 15-14	2.0 ft 0.6 m Overhose 8.0 ft 2.4 m Airhose
45-2784	Non-Overhose to Overhose conversion kit. Includes 45-2637 Overhose and 45-1408 Airhose	12-10, 12-11, 12-12, 12-13, 15LF, 15-14	4.0 ft 1.2 m Overhose 8.0 ft 2.4 m Airhose
45-2785	Non-Overhose to Overhose conversion kit. Includes 45-2688 Overhose and 45-1408 Airhose	12-10, 12-11, 12-12, 12-13, 15LF, 15-14	8.0 ft 2.4 m Overhose 8.0 ft 2.4 m Airhose
45-2786	Non-Overhose to Overhose conversion kit. Includes 45-2629 Overhose and 45-1508 Airhose	10-20, 10-21, 10-22, 10-25, 10-26, 10-27, 12-20, 12-21, 12-22, 12-25, 12-26, 12-27, 12-28, 15LS, 15LN	2.0 ft 0.6 m Overhose 8.0 ft 2.4 m Airhose
45-2787	Non-Overhose to Overhose conversion kit. Includes 45-2687 Overhose and 45-1508 Airhose	10-20, 10-21, 10-22, 10-25, 10-26, 10-27, 12-20, 12-21, 12-22, 12-25, 12-26, 12-27, 12-28, 15LS, 15LN	4.0 ft 1.2 m Overhose 8.0 ft 2.4 m Airhose
45-2788	Non-Overhose to Overhose conversion kit. Includes 45-2688 Overhose and 45-1508 Airhose	10-20, 10-21, 10-22, 10-25, 10-26, 10-27, 12-20, 12-21, 12-22, 12-25, 12-26, 12-27, 12-28, 15LS, 15LN	8.0 ft 2.4 m Overhose 8.0 ft 2.4 m Airhose
45-6000	Includes 45-6001 Overhose and 45-0948 Airhose	12-03, 12-04	4.0 ft 1.2 m Overhose 5.0 ft 1.5 m Airhose
45-6012	Includes 45-6002 Overhose and 45-0948 Airhose	12-03, 12-04	2.0 ft 0.6 m Overhose 5.0 ft 1.5 m Airhose
45-6013	Includes 45-6003 Overhose and 45-0948 Airhose	12-03, 12-04	1.0 ft 0.3 m Overhose 5.0 ft 1.5 m Airhose

Activeswivel

Available for 1/4" NPT inlet only

Model	Description	Air Flow Volume	Max Pressure	Weight		Air Inlet Size
		Scfm	lb/in ² bar	Lb	kg	in
SW-102	Activeswivel	25 m ³ /m	150	0.2	0.0907185	1/4



Lubricants

Part Number	Size	Description	MSDS Number	Table Sort Order
45-0918	1 qt. plastic	Lubricating Oil - Qt.	CPT-155	4
45-0919	1 gal. metal	Lubricating Oil - Gal.	CPT-155	5
45-0980	2 oz. tube	Moly-XL 250 Oil Angle Head Gear Grease for Grinders	CPT-148	9
45-0983	2 oz. tube	Dotco Planetary Gear Grease for Grinders & Sanders	CPT-147	8
513156	18 oz. can	Magnalube-G Assembly Tool Teflon Grease	CPT-145	7
533485	1 gal. metal	Air Tool Oil (500021) 1 gal. can	CPT-153	2
535090		MR Series Motors - Gearing Oil 1 gal. can		
536333	1 gal. metal	High Film Strength Oil (for severe use) 1 gal. can	CPT-154	3
539317	1 ct quart plastic bottle	Univis Pulse Tool Hydraulic Oil	CPT-157	6
540397	1 qt. plastic		CPT-153	1
60538		Air Lube 10W/NR Air Line Oil	CPT-153	
60539		Air Lube 10W/NR Air Line Oil	CPT-153	
633190		Lube-A-Tube		

Under normal conditions of use, lubrication products sold separately for or used within these tools should not cause an exposure hazard. Refer to the Material Safety Data Sheet M.S.D.S. for Safety and Disposal information. M.S.D.S. sheets shown in the chart are available upon request.

Push Type Grease Gun

Cleco Dotco Lube sold separately - see above

- Push Type Grease Gun

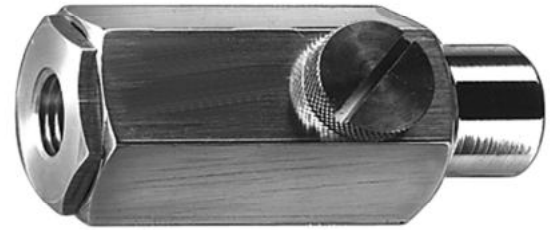


Model	Description
45-1982	Grease Gun

Airline Filter & Lubricator

Mounts in Hose Line.

- One ounce reservoir good for average 8-hour shift.



Model	Description	Max Pressure	Air Inlet Size
		lb/in ² bar	in
45-0201	Lubricator	100 lb/in ² 6.9 bar	1/4
45-0301	Lubricator	100 lb/in ² 6.9 bar	3/8



Solutions are in our DNA.

